



Palm and Pine

A publication of the San Geronio Chapter of the Sierra Club
Serving Riverside and San Bernardino Counties



Volume 37 Number 5

Protect America's Environment For our Families... For our Future

SEPTEMBER—OCTOBER 2007

In This Issue

- Contacts for Chapter office**2
Plus website & membership
- Protect Mojave Preserve**.....2
Please write a letter
- Is Bottled Water Better?**.....3
The simple and cheaper solution
- Group News**.....4
Mountains/Los Serranos/Moreno Valley
- Calendar**5
Something for everyone: Outings, Activities and meetings
- Chapter Positions**8
Contact information
- Is Recycled Paper in Trouble?**.....9
What you can do
- Palm & Pine Fund Appeal**.....10
Please see insert in paper
- Huts, lodges available**.....10
Local Club mountain facilities
- How Does Your Sunscreen Rank?..**10
Check out the EWG database
- Desert Institute Classes**12
Fall's coming—time for the desert
- UCR Extension Nature Programs** .12
Something for everyone

Membership Meetings

Tuesday, September 4 The True Cost of Food

Dick Morris from EarthSave will provoke some thought about the effect of our food choices and how the way we eat and where we purchase our food affects our planet and our quality of life.

Tuesday, October 2

Our Consumer Culture

Phill Courtney will present a chapter from his new book "Beyond 9/11: Transforming America to Win the War for Justice", which focuses on our consumer culture.

Programs begin at 7:30 p.m. at the San Bernardino County Museum in Redlands (California St exit 10 Fwy)

Chapter Opposed to Liberty Quarry

San Geronio Executive Committee votes to oppose July 24

By Jim Mitchell

One of the nation's largest hard rock quarry mines could be located in the foothills above Temecula. The Riverside County Board of Supervisors could make the final decision soon on whether or not to grant a mining permit to Granite Construction to start mining Liberty Quarry. If Liberty Quarry is approved, it could adversely affect the health and welfare of surrounding residential communities with populations well over 250,000. But that is only part of the problem. To understand the full impact of putting a quarry mine in the Temecula Foothills, let's start with the San Diego State University's Santa Margarita Ecological Reserve that is located next to the proposed quarry mine site. And the best way to appreciate the magnitude of the problem is to go see it.



Photo by Spring Strahm
The Santa Margarita River on San Diego State University's Santa Margarita Ecological Reserve.

Getting to the Santa Margarita Ecological Reserve is not easy. It is tucked back in the rolling Temecula Foothills east of the I-15 freeway at the end of a dirt road and there are no signs. The best way to go is accompanied by a volunteer from Save Our Southwest Hills who have been fighting the pro-

posed quarry mine for several years. SOS Hills will meet you at the 76 Gas Station at the entrance to Temecula's Old Town. From there you will caravan the 15 minutes or so up the winding roads to the Reserve's gated entrance. At that point you will probably climb into the back of

joy some spectacular scenery. From here you can see for miles in all directions, miles of rolling hills that look exactly as they did a hundred years ago. This is truly a unique area, particularly when you remember it is in the middle of fast growing Riverside County.

On your arrival at the Reserve Field Station you will be greeted by Matt Rahn, field biologist and SDSU Executive Director of the Reserve. Dr. Rahn will explain that the isolated and untouched nature of the Reserve is exactly what makes it so valuable as a research and educational facility. He will show you some of the research projects currently underway; including studies affecting global warming, homeland security, air pollution and wildfire detection. You will learn that many of the research projects rely upon sensitive instruments to record vital information. There is

a pickup truck for the final mile of narrow dirt road to the Reserve's Field Station.

It sounds like a big hassle, but it is well worth every minute of it. During your visit you will learn about the impressive number of important research projects that are currently underway. And you will also en-

widespread concern among researchers that the noise and dust of a nearby rock quarry mine operation will disturb these instruments and jeopardize years of research as well as reduce the value of the Reserve for future research and education.

And then there is the nearby

(Continued on page 2)

Time Once Again For Chapter Elections

The Chapter Nominating Committee will be posting their selections for candidates for the Executive Committee on August 28 at the chapter office. The election ballots will be found in the November/December issue of the Palm and Pine.

There will be four members elected to serve on the Executive Committee from January 1, 2008 through December 31, 2009. If your name is not listed, you may still run for election as a Petition Candidate.

To do so, contact the chapter office at 951 684-6203 or sangorgonio@charter-internet.com or contact the Nominating Committee Chair, Dave Barrie at m.barrie@att.net to verify that your name appears or to obtain a Petition Packet.

Nominating Petitions must bear the names and signatures of at least 15 Chapter members as of September 1, 2007 and must be received by the Nominating Committee no later than 6:00 pm on September 11, 2007.

Candidate photographs and statements up to 250 words may be included with the Petition for publication in the November/December Palm and Pine. The statements should include prior Sierra Club experience and the Chapter Committees the candidate is willing to Chair. If a photo is included and you wish it returned, you must include a SASE.

(Continued from page 1)

QUARRY

Santa Margarita River. From the Field Station you can look down into the Temecula Gorge and see far below the meandering Santa Margarita River, the last free flowing river in Southern California and one of only a handful of rivers like this left in the state. The State Bureau of Reclamation calls the Santa Margarita River "one of the most biologically important rivers" in the State. Because of its scientific value, Dr. Rahn says biologists travel from all over the world to study the plants and animals that live along its banks. Geologists fear that a nearby rock quarry will pollute the river from both seepage and drainage.

And if that was not enough, there is another problem with the proposed site of Liberty Quarry. It will sit on top of the last remaining wildlife corridor connecting the Santa Anna Mountain range with the Mountain Palomar Mountain range, the primary linkage between the coastal habitat and the inland

habitat. The survival of many of our animal species in Southern California could be at risk.

But the biggest worry for many of those that live in the Temecula Valley, and nearby Rainbow and Fallbrook, is the hazardous air pollution that will be generated by Liberty Quarry. Contrary to what quarry operators tell you, hard rock quarry mines can give off substantial



Photo by Spring Strahm
View of Temecula from the Santa Margarita Preserve

quantities of health threatening, silica laden dust as well as toxic, cancer causing diesel emissions.

And with this potential air contamination in mind, Liberty Quarry's location could not be worse for the health of the surrounding neighborhoods. Liberty Quarry will be in the direct path of the strong prevailing winds that daily wash over the Temecula Foothills on their way to the homes and to the more than 40 schools below. The afternoon winds in Temecula Valley are as regular as clockwork. It is the reason the air in Southwest Riverside County is cleaner and the sky is bluer. The ocean winds also provide the afternoon cool down that is

needed for the proper maturing of grapes in the Temecula Valley Wine Country vineyards.

But all of the benefits brought by the ocean winds could become a big liability if the air becomes polluted from an operating quarry mine.

One of the closest towns to the proposed quarry mine is Rainbow. Long time resident Jerri Arganda has made a study of the planned quarry and is very worried about what might happen in her community that is downwind of the proposed quarry. "This quarry dust is known to cause respiratory disease and can be fatal. Children and the elderly, as well as anyone with breathing problems are particularly susceptible."

Arganda also knows that if Liberty Quarry starts mining they will operate for 50 to 75 years before the aggregate minerals run out. With the potential damage to the San Diego State University Reserve, the possible contamination of the Santa Margarita River, the threat to the wildlife migration corridor and the air quality threat; she is wondering, "When our children and grand children are grandparents themselves, then what? Is this our legacy to them? Is this how we will be remembered?" She says she doesn't like the answers to those questions and plans to do whatever she can to stop Liberty Quarry.

Preserve The Future

Not everyone can make a large gift to protect the environment during their lifetime, but you can preserve the environment for generations to come by remembering the Sierra Club in your will.

There are many gift options available. We can even help you plan a gift for your local Chapter.

For more information and confidential assistance, contact:

John Calaway
Director, Gift Planning
85 Second Street, 2nd Floor
San Francisco, CA 94105
(800) 932-4270
planned.giving@sierraclub.org

TAKE ACTION!

E-mail or write the Riverside County Board of Supervisors opposing the location of Liberty Quarry in the Temecula Foothills. Write to your Supervisor below at: 4080 Lemon St., Riverside, CA 92501

1st District
Robert A. Buster
Riverside
951-955-1010
Lake Esmore: 951-245-3330
district1@rcbos.org

2nd District
John F. Tavaglione
Chairman
Riverside: 951-955-1020
district2@rcbos.org

3rd District
Jeff Stone
Riverside: 951-955-1030
district3@rcbos.org

4th District—Roy Wilson
Riverside: 951-955-1040
Palm Desert: 760-863-8211
district4@rcbos.org

5th District—Marion Ashley
Riverside: 951-955-1050
district5@rcbos.org

Contact Save Our Southwest Hills to arrange a San Diego State University Ecological Reserve tour and to offer your support at www.sos-hills.org

Palm and Pine

USPS 341-430
ISSN 1090-9974
A bi-monthly newspaper serving Riverside and San Bernardino counties.

Published by the
Sierra Club

San Gorgonio Chapter
4079 Mission Inn Avenue
Riverside, CA 92501-3204
(951) 684-6203
Fax (951) 684-6172
Membership (951) 684-5846
<http://sangorgonio.sierraclub.org>

The Palm and Pine is published six times per year January/February, March/April, May/June, July/August, September/October and November/December. Submit all articles to the Editor by the 5th of the month prior to issue. Preferred format is electronic mail. The Editor reserves the right to edit all work for reasons of space, clarity or libel. If you wish to have your photos or disks returned, please include a stamped, self-addressed envelope. Outings must be submitted to the appropriate Outings Chair.

Editor

Ralph Salisbury
2995 Floral Ave, Riverside, CA 92507
(951) 686-4141
Fax (951) 686-3559
e-mail: ralphsalisbury@charter.net

Outings Calendar Submissions

Ralph Salisbury
2995 Floral Ave, Riverside, CA 92507
(951) 686-4141
e-mail: ralphsalisbury@charter.net

Webmaster

Linda Jones
Lindareej@msn.com
<http://sangorgonio.sierraclub.org>

Meetings Calendar Submissions

Ladd Seekins
2218 De Soto St, Grand Terrace, CA 92313—5474
(909) 888-0161 Weekdays
(909) 825-4427 Weekends & evenings
e-mail: lgseekins@sbcglobal.net

Non-Member Subscriptions (\$9.00)

Sierra Club, San Gorgonio Chapter
4079 Mission Inn Ave
Riverside, CA 92501-3204
(Sierra Club members not members of the San Gorgonio Chapter: Supply Club membership number.)

Member Change of Address

Sierra Club, Change of Address
PO Box 52968
Boulder, CO 80322-2968
(Be sure to supply Membership number)

The Palm and Pine is published bimonthly. Periodicals postage paid at Riverside, CA

Membership Information

There is a membership coupon in this issue. You can also contact the Membership Chair (see Chapter Executive Committee Directory this issue) or the Sierra Club office in San Francisco (415) 977-5663.

POSTMASTER:

Send address changes to:
Palm and Pine
Sierra Club San Gorgonio Chapter
PO Box 53968
Boulder, CO 80322-2968

Protect Mojave National Preserve—Letters Needed

By Sid Silliman

San Bernardino County filed suit in Federal Court in October 2006 to quiet title to fourteen alleged “rights of way” within the Mojave National Preserve under Revised Statute 2477, an antiquated 19th century mining law. The County’s lawsuit against the U.S. Department of Interior claims all of the major roads in the Mojave Preserve (including Kel-baker Road) and dirt tracks like the New York Road.

County control of roads in the Mojave Preserve under R.S. 2477 poses a threat to the integrity of the Preserve, its wildlife, and critical habitat. The potential threat to the desert tortoise is of particular concern.

We urge you to write your Supervisor to (a) express your concerns about the lawsuit and (b) urge that the suit be withdrawn. Please write as a constituent, a property owner, or a taxpayer. The following points might be included; however a personal letter is best:

- San Bernardino should be proud that the Mohave Preserve is within its boundaries. Over 1,000 plants and animals can be found on the Preserve’s 1.6 million acres—including bighorn sheep, desert tortoise, eagles, and hawks. The Preserve’s vistas, mountain ranges, Joshua Tree woodlands, cactus gardens, wildflowers, sand dunes, and cinder cones draw thousands of visitors;
- The lawsuit is a frivolous use of taxpayer dollars; and
- The Mojave roads are better administered by the National Park Service. Federal environmental laws ensure protection for wildlife and habitat.

Identify your Supervisor at <http://www.co.san-bernardino.ca.us/redistrict/>.

Address your letter to your supervisor at:
**385 N. Arrowhead Ave., 5th Floor
 San Bernardino CA 92415**

1st District—Brad Mitzelfelt
 909-387-4830
supervisormitzelfelt@sbcounty.gov

2nd District—Paul Biane
 909-387-4833 FX 909-387-3265
supervisorbiane@sbcounty.gov

3rd District—Dennis Hansberger
 909-387-4855 FX 909-387-3018
supervisorhansberger@sbcounty.gov

4th District—Gary Ovitt
 909-387-4866
supervisorovitt@sbcounty.gov

5th District—Josie Gonzales
 909-387-4655 FX 909-387-5392
supervisorgonzales@sbcounty.gov



Is Bottled Water Better?

Bottled water manufacturers’ marketing campaigns capitalize on isolated instances of contaminated public drinking water supplies by encouraging the perception that their products are purer and safer than tap water.

But the reality is that tap water is actually held to more stringent quality standards than bottled water, and some brands of bottled water are just tap water in disguise. What’s more, our increasing consumption of bottled water—more than 22 gallons per U.S. citizen in 2004 according to the Earth Policy Institute—fuels an unsustainable industry that

takes a heavy toll on the environment.

Environmental Impact

Fossil fuel consumption.

Approximately 1.5 million gallons of oil—enough to run 100,000 cars for a whole year—are used to make plastic water bottles, while transporting these bottles burns thousands more gallons of oil. In addition, the burning of oil and other fossil fuels (which are also used to generate the energy that powers the manufacturing process) emits global warming pollution into the atmosphere.

Water consumption.

The growth in bottled water production has increased water extraction in areas near bottling plants, leading to water shortages that affect nearby consumers and farmers. In addition to the millions of gallons of water used in the plastic-making process, two gallons of water are wasted in the purification process for every gallon that goes into the bottles.

Waste.

Only about 10 percent of water bottles are recycled, leaving the rest in landfills where it takes thousands of years for the plastic to decompose.

The Simple (and Cheaper) Solution

The next time you feel thirsty, forgo the bottle and turn to the tap. You’ll not only lower your environmental impact but also save money—bottled water can cost up to 10,000 times more per gallon than tap water. And because the U.S. Environmental Protection Agency’s standards for tap water are more stringent than the Food and Drug Administration’s standards for bottled water, you’ll be drinking water that is just as safe as, or safer than, bottled.

If, however, you don’t like the taste of your tap water or are unsure of its quality, you can buy a filter pitcher or install an inexpensive faucet filter to remove trace chemicals and bacteria. If you



will be away from home, fill a reusable bottle from your tap and refill it along the way; travel bottles with built-in filters are also available. Finally, limit your bottled water purchases for those times when you’re traveling in countries where water quality is questionable.

Related Links:

EPA—Ground Water & Drinking Water: <http://www.epa.gov/safe-water/faq/faq.htm>

Earth Policy Institute—Bottled Water: Pouring Resources Down the Drain: <http://www.earth-policy.org/Updates/2006/Updates-51.htm>

CommonDreams.org: <http://commondreams.org/headlines03/1209-10.htm>

(This information is provided by The Union of Concerned Scientists. For more Green Tips go to <http://www.uicsa.org/publications/greentips>)



Photo by Ralph Salisbury

Early arrivals to San Bernardino Peak bask in the sun this past June 23.

Group and Section News

Moreno Valley Group

By Ann Turner McKibben

Sometime during the month of February 2007 approximately five (5) miles of riparian habitat was destroyed along the San Jacinto River near the city of San Jacinto (from Bridge Street upstream to State Street). The willow-cottonwood-riparian habitat was home to at least two pairs of Least Bell's Vireos (documented by the Santa Ana Watershed Association), a federal endangered species. The Riverside County Food Control and Water Conservation District (RCFC) contracted with a private company to do a modest 'clean-up' the area and apparently the range of clearing extended beyond their original intent. The RCFC is in the process of doing an internal investigation into the destruction and loss of habitat for the Least Bell's Vireos. The Friends of the Northern San Jacinto, Tri-County Conservation League, and the Moreno Valley Group, Sierra Club wrote a letter asking the Division of Law Enforcement of the U.S. Fish and Wildlife Service to investigate this violation of the federal Endangered Species Act.

Another story of habitat destruction involves the loss of an adult and chick burrowing owl at the San Jacinto Wildlife Area. The loss took place at the Walker property adjacent to Mystic Lake when a Department of Fish and Game contractor buried a burrowing owl nest during work on a habitat construction project. The reconstruction of habitat at this location was approved on a negative declaration under the California Environmental Quality Act (CEQA) which means no biological studies were done previous to the start of construction. This unfortunate incident could have been prevented if the Department of Fish and Game had done their job. The Friends of the

Northern San Jacinto Valley and the Moreno Valley Group, Sierra Club have written a letter to the Department of Fish and Game director Ryan Broddrick asking that the project be stopped immediately until a proper CEQA analysis is done. The stress of urbanization has reduced the amount of viable habitat for burrowing owl throughout the inland area. To have this loss at the San Jacinto Wildlife Area, a reserve in Riverside County's Multi-Species Habitat Conservation Plan, only shows that the Department of Fish and Game continues to violate the public trust by not replacing the area manager position since last year's retirement of former manager Tom Paulek.

Another development proposed for the San Jacinto valley is called Motte Ranch Specific Plan (SP366) which is located east of The Villages of Lakeview (Lewis Operating Corp) project. Both projects are south of the San Jacinto Wildlife Area (SJWA) and north of the Ramona Expressway. The Motte property owners are hoping to convert agricultural land to housing and commercial uses. When they went before the Riverside County Planning Commission in February 2007, the Commission had concerns that a residential development would be surrounded by agricultural uses (dairy farms). The SJWA and adjacent hunt clubs, over which the SJWA has conservation easements on the northern border of the project, was not even on the maps or in the project description. In July 2007 the developer and the County came back to the Planning Commission with a solution, not only for Motte, but also for the Villages of Lakeview and several other developers to the south and east of the wildlife area who are interested in converting

(Continued on page 10)



Photo by Mary Barrie

Dave Barrie talks about fluorescent lighting during the Forest Festival.

Mountains Group

By Dave Barrie

June 9th found the Mountains Group participating in the annual Forest Festival at Lake Arrowhead Village.

This gathering of mostly mountain area non-profits is co-hosted by the Mountains Group and the U.S. Forest Service with support from the Lake Arrowhead Communities Chamber of Commerce and the Lake Arrowhead Village.

This was our second year holding the event on the Village Peninsula instead of at the Arrowhead Ranger Station on Highway 18 in Skyforest.

While the Village location is not "in" the forest like the Ranger station, it is surrounded by forest (visibly) and the increased attendance, better parking, and reduced chance of fog compensate for any feelings that we have about missing the natural setting of the old location.

We don't keep count but, my sense is that we saw more people, had more conversations, and experienced an increase in the understanding of our issues by the folks that came by.

Our booth focused on Global Warming and the role that individuals can play in helping curtail carbon emissions. The Sierra Club's "It Takes 2" action sheet was well received. Visitors to our display were happy to have simple, practical ideas about what they can do to help.

I have to admit though that there was one attendee that was not as convivial as most.

In our role as co-hosts of the event we greeted visitors at the entrance to the Village Peninsula area and gave any that desired a map of the area with identification of the exhibitors. And that's how I met "her".

I stepped forward (in my Sierra

Club t-shirt) to greet a new visitor (and her teen daughter) holding out one of the maps for them but, before I could say anything she exclaimed "we know all about you", grabbed her daughter by the shoulders and scurried quickly away. There may have been a hand sign to ward off evil but I can't be sure.

I don't know if she meant me personally, or the Sierra Club. Looks like there is still some work to be done to overcome resistance.

All-in-all we had an most excellent time and were happy to be there.

Special thanks to Heather Sargeant and Lynda Davaran for their efforts in organizing the event, communicating with all of the participants, and helping staff our booth.

And thanks to Sherry Noone, Marta Hethmon, and Carolyn Foulon for helping out in the booth as well.

In July (Saturday the 14th) we visited the Moonridge Animal Park in Big Bear...an event organized by our fledgling Outings Leader Steve Farrell.

Moonridge has been rehabilitating wildlife since 1960 and they ably communicate the impact of human activities on the well being of wildlife.

Our group was given a guided tour and we received lots of insider information about the zoo's permanent residents and how they came to be there.

Moonridge is planning a relocation and, if all goes as envisioned, their new location will not only be about the rehabilitation and shelter of animals but will also be a showcase for conservation and sustainability.

We will hear more about their ideas and plans at our monthly meeting on September 10th.

Los Serranos Group



Getting ready to climb Sugarloaf during the campout at Doug's cabin July 20-22.

Calendar of Outings, Meetings, and Other Events

SEPTEMBER THROUGH OCTOBER 2007

The outings calendar is available on the Internet at <http://sangorgonio.sierraclub.org>

CALENDAR SUBMISSIONS

DEADLINE: Items for the November/December Calendar are due early by October 5. FORMAT items similar to those below. Send items electronically if possible. OUTINGS: Send outings write-ups to your group or section Outings Chair. MEETINGS and other events: Ladd will be on vacation, so send meeting announcements electronically to Ralph Salisbury at <ralphsalisbury@charter.net>

GENERAL INFORMATION, RULES AND DISCLAIMERS

All Outings Leaders are Chapter Certified Leaders having appropriate Outings Training Courses, First Aid Courses, and experience for the Outings they lead. LEADERS may exclude individuals from participation if they believe they may not be qualified. Non-Sierra Club members may join outings unless otherwise stated in the write-up. All participants agree to abide by the Leader's rules. Participants should CALL THE LEADER AHEAD TO SIGN-UP.

WHAT TO BRING

Many Outings specify items to be carried by EACH participant. Do not attend Outings without the specified items unless you have first discussed it with the leader. Often the TEN ESSENTIALS are required. They are: 1) map, 2) compass, 3) flashlight, 4) knife, 5) windproof/waterproof matches in waterproof case, 6) fire starter, 7) first aid kit, 8) extra food and water for emergency use only, 9) extra clothing including rainwear, and 10) sun protection including sunscreen/sunglasses/hat.

ADVENTURE PASS SPECIAL NOTICE

Outings occurring in the San Bernardino, Angeles, Cleveland, or Los Padres National Forests require a Forest Service "Adventure Pass" for each vehicle. These Outings will be preceded by ** in the listings that follow. Be sure to contact the leader regarding permits. The permits cost \$30 per year or \$5 per day, however they may not be obtainable the day of your outing. If you arrive at the meeting place without making arrangements with the leader and you don't have a pass or find a ride in a vehicle with a pass, you will not be able to attend the outing. You are expected to share the cost of the daily passes equally with the others in the vehicle. A \$.50 contribution from everyone in the vehicle is reasonable for annual passes (above normal mileage contribution). America The Beautiful Interagency Passes may be used in lieu of the Adventure Pass.

CARPOOLING POLICY

In the interests of facilitating the logistics of some outings, it is customary that participants make carpooling arrangements. The Sierra Club does not have insurance for carpooling arrangements and assumes no liability for them. Carpooling, ride sharing, or anything similar is strictly a private arrangement among the participants. Participants assume the risks associated with this travel. Drivers should have adequate insurance coverage and their vehicles should have no safety defects. Drivers of carpools agree to not consume any alcoholic beverages. It is customary for riders to share expenses with the driver. Five cents per mile per person for short trips is suggested while three cents per mile per person over 100 miles is usually reasonable.

LIABILITY WAIVER

In order to participate on one of the Sierra Club's outings, you will need to sign the following liability waiver.

Sign-In Sheet & Acknowledgment of Outing Member Responsibility, Express Assumption of Risk, and Release of Liability

I understand that during my participation in this Sierra Club Outing, I may be exposed to a variety of hazards and risks, foreseen or unforeseen, which are inherent in each Outing and cannot be eliminated without destroying the unique character of the Outing. These inherent risks include, but are not limited to, the dangers of serious personal injury, property damage, and death ("Injuries and Damages") from exposure to the hazards of travel and the Sierra Club has not tried to contradict or minimize my understanding of these risks. I know that Injuries and Damages can occur by natural causes or activities of other persons, animals, trip members, trip leaders and assistants or third parties, either as a result of negligence or because of other reasons. I understand that risks of such Injuries and Damages are involved in adventure travel such as Sierra Club Outings and I appreciate that I may have to exercise extra care for my own person and for others around me in the face of such hazards. I further understand that on this Outing there may not be rescue or medical facilities or expertise necessary to deal with the Injuries and Damages to which I may be exposed.

In consideration for my acceptance as a participant on this Outing, and the services and amenities to be provided by the Sierra Club in connection with the Outing, I confirm my understanding that:

- I have read any rules and conditions applicable to the Outing made available to me; I will pay any costs and fees for the Outing; and I acknowledge my participation is at the discretion of the leader.
- The Outing begins and ends at the location where the Outing officially commences with leader and participants in attendance, as designated by the Sierra Club ("Trailhead"). The Outing does not include carpooling, transportation, or transit to and from the Trailhead, and I am personally responsible for all risks associated with this travel. This does not apply to transportation provided by the Sierra Club after the commencement and before the end of the Outing.
- If I decide to leave early and not to complete the Outing as planned, I assume all risks inherent in my decision to leave and waive all liability against the Sierra Club arising from that decision. Likewise, if the leader has concluded the Outing, and I decide to go forward without the leader, I assume all risks inherent in my decision to go forward and waive all liability against the Sierra Club arising from that decision.
- This Agreement is intended to be as broad and inclusive as is permitted by law. If any provision or any part of any provision of this Agreement is held to be invalid or legally unenforceable for any reason, the remainder of this Agreement shall not be affected thereby and shall remain valid and fully enforceable.
- To the fullest extent allowed by law, I agree to WAIVE, DISCHARGE CLAIMS, AND RELEASE FROM LIABILITY, and to INDEMNIFY AND HOLD HARMLESS the Sierra Club, its officers, directors, employees, agents, and leaders from any and all liability on account of, or in any way resulting from Injuries and Damages, even if caused by negligence of the Sierra Club its officers, directors, employees, agents, and leaders, in any way connected with this Outing. I understand and intend that this assumption of risk and release is binding upon my heirs, executors, administrators and assigns, and includes any minors accompanying me on the Outing.

I have read this document in its entirety and I freely and voluntarily assume all risks of such Injuries and Damages and notwithstanding such risks, I agree to participate in the Outing. Note: If the participant is a minor, the minor's guardian must sign on the minor's behalf.

RECURRING MONTHLY MEETINGS

(LOOK IN CALENDAR FOR DATES)

- | | | |
|---|---------------------------------|----------------|
| (1ST MON) 6:00 PM | SB MOUNTAINS GROUP EXCOM | MEETING |
| Even numbered months plus November (Feb, Apr, Jun, Aug, Oct, Nov and Dec) LOCATION: (Unless otherwise noted) Lake Ridge Escrow Conference Room 27236 Blue Jay Mall. INFO: DAVE BARRIE, (909) 337-0313. SB MOUNTAINS GROUP | | |
| (1ST TUE) | LOS SERRANOS GROUP EXCOM | MEETING |
| Odd-numbered months only (Jan, Mar, May, Jul, Sep, & Nov). PLACE: For meeting time and place, call DAVID THORNE, (909) 949-8046. LOS SERRANOS GROUP | | |
| (1ST TUE) 6:30 PM | BIG BEAR GROUP EXCOM | MEETING |
| The meeting place rotates. INFO: CHRISTIE WALKER, (909) 866-5006. BIG BEAR GROUP | | |
| (1ST TUE) 7:30 PM | SAN GORGONIO CHAPTER | MEETING |
| PROGRAM: See front-page notice. Afterwards, SAN GORGONIO SIERRA SINGLES will adjourn for food and drink. COST: \$1 donation requested. PLACE: San Bernardino County Museum, 2024 Orange Tree Lane, Redlands. DIRECTIONS: Exit I-10 at California St. INFO: RALPH SALISBURY, Ralphsalisbury@charter.net. CHAPTER | | |

(2ND MON) 7:00 PM	SB MOUNTAINS GROUP	MEETING
Monthly program meeting. No meeting in August or December. PLACE: St. Richard's Episcopal Church, 28708 Highway 18, Sky Forest. INFO: DAVE BARRIE, (909) 337-0313. SB MOUNTAINS GRP		

(2ND TUE) 7:00 PM	CHAPTER CONSERVATION COMMITTEE	MEETING
(In July only the meeting will be the 3 rd Tuesday, July 18.) Monthly meeting. Take part in working on important conservation issues. Please come: we need your help! PLACE: San Gorgonio CHAPTER Office, 4079 Mission Inn Ave., Riverside. INFO: KIM FLOYD, Conservation Chair, kimfloyd@verizon.net, (760) 249-5385, or Conservation Coordinator TERRY WOLD, terry.wold@sierraclub.org, (951) 684-6203. CHAPTER		

(2ND WED) 7:00 PM	MOJAVE GROUP	MEETING
Monthly meeting except for July and August. PLACE: Sterling Inn, Regency Room, 17738 Francesca, Victorville. (One block north of Bear Valley Rd. on Ridgecrest.) Enter on Ridgecrest side of the building. INFO: CAROL WILEY, (760) 245-8734, earthlingwiley@webtv.net. MOJAVE GROUP		

(3RD TUE) 6:00 PM	SAN JACINTO VALLEY (HEMET) CONS COMMITTEE	MEETING
Monthly conservation meeting. The public is welcome. LOCATION: Call or email for location and directions. CONTACT: SHAULI ROSEN-RAGER, (951) 767-2203, gardens@netzon.net. SAN JACINTO VALLEY (HEMET) CONSERVATION COMMITTEE		

(3RD TUE) 6:30 PM	BIG BEAR GROUP	MEETING
Monthly meeting. INFO: For current program information, please visit the Group web site www.sierraclubbigbeargroup.org. PLACE: Big Bear Discovery Center, 40971 North Shore Dr. (Hwy. 38), Fawnskin. CONTACT: CHRISTIE WALKER, (909) 866-5006. BIG BEAR GROUP		

(3RD TUE) 7:00 PM	LOS SERRANOS GROUP	MEETING
Monthly meeting except August. The public is welcome. Refreshments will be served. PLACE: Educational Building, Upland Presbyterian Church, Euclid Ave. at 11th. INFO: MARY ANN RUIZ, (909) 628-1285. LOS SERRANOS GROUP		

(4TH TUE) 7:00 PM	SAN GORGONIO CHAPTER EXCOM	MEETING
Chapter governance meeting. PLACE: The San Gorgonio Chapter office, 4079 Mission Inn Ave., Riverside. INFO: RALPH SALISBURY ralphsalisbury@charter.net. CHAPTER		

WEEKLY REOCCURRING OUTINGS AND FITNESS ACTIVITIES

Please read "LIABILITY WAIVER" preceding these listings

MON 5:30 PM	CLAREMONT WILDERNESS PARK	WALK
Depending on the group's wishes we may hike the entire 5 mile loop. BRING: water and wear sturdy shoes. MEET: Claremont Wilderness Park, upper paved parking lot, top of Mills Ave. in Claremont INFO: LEADER: JOE WHYTE, (909) 949-0899. LOS SERRANOS GROUP		

MON 6:00 PM	RIVERSIDE MT. RUBIDOUX ONE HOUR FITNESS	WALK
MEET: Ninth Street entrance to Mt. Rubidoux. INFO: JUDY SMITH (951) 369-5117. SAN GORGONIO SIERRA SINGLES		

WED 7:00 PM	MOJAVE GROUP, VICTOR VALLEY	WALK
Conditioning walk every Wednesday except Group meeting might on the 2nd Wednesday of the month. Walks are paced for participants. Enjoy the evening air, river breeze, sunsets, stars and moon on a three mile walk around Jess Ranch and along the Mojave River. MEET at the Victor Valley Museum in Apple Valley. INFO: BILL SPRENG (760) (951) 4520, bspreng@gte.net or JENNY WILDER (760) 220-0730, JensOasis@aol.com. MOJAVE GROUP		

AUGUST 27 – SEPTEMBER 2

Please read "LIABILITY WAIVER" preceding these listings (Also refer to Weekly reoccurring Outings and Activities)

AUG 28 (TUE) 7:00 PM	SAN GORGONIO CHAPTER EXCOM	MEETING
Chapter governance meeting. PLACE: The San Gorgonio Chapter office, 4079 Mission Inn Ave., Riverside. INFO: RALPH SALISBURY ralphsalisbury@charter.net. CHAPTER		

SEP 1-3 (SAT-MON)	TUSHAR MOUNTAINS, UTAH	SERVICE TRIP
Join Utah Chapter and others, perhaps including the Forest Service and the local rancher, to conduct range monitoring in one of Utah's wildest and least-known mountain ranges. The Tushar Mountains, east of Beaver, include high alpine peaks, rugged escarpments, wildlife-rich meadows, aspen and still-wild conifer forests. We'll collect on-the-ground data for a collaborative process to resolve a grazing decision. (Sierra Club and others appealed this decision and hope to change grazing management in order to bring beaver to key streams and improve aspen re-growth.) What better way to learn more about this complex issue than on a service trip in a beautiful place! Central commissary by Vicky. INFO/RESERVATIONS: VICKY HOOVER, Utah Wilderness Task Force, (415) 977-5527 vicky.hoover@sierraclub.org>. CNRCC DESERT COMMITTEE/UTAH WILDERNESS TASK FORCE		

SEPTEMBER 3 – SEPTEMBER 9

Please read "LIABILITY WAIVER" preceding these listings (Also refer to Weekly reoccurring Outings and Activities)

SEP 3 (MON) 8:00 AM	PACIFIC ELECTRIC TRAIL STROLL	HIKE
Come see history in the making and explore the section of the Pacific Electric Trail, which leads into historic Etiwanda from the east side of Rancho Cucamonga. Easy hike of about 3 miles. Enjoy refreshments provided by Dean afterward. Please RSVP by Aug 30. MEET in Windrows Park on Victoria Park Lane which is north of Baseline. DIRECTIONS: From the 15 (north of the 10) go west through 4 lights and then turn north (right) at the 5th light on Victoria Park Lane. Follow it up the hill to Windrows Park. Turn right on North Victoria Windrows Loop and then hang a left into the park parking lot. From Rancho Cucamonga take Baseline east past Day Creek and turn north on Victoria Park Lane to go uphill to Windrows Park. Call Dean for directions if you need help. INFO: LEADER: DEAN SHIMEK, dtsierra@msn.com, (909) 899-2795. LOS SERRANOS GROUP		

SEP 4 (TUE)	LOS SERRANOS GROUP EXCOM	MEETING
Odd-numbered months only (Jan, Mar, May, Jul, Sep, & Nov). PLACE: For meeting time and place, call DAVID THORNE, (909) 949-8046. LOS SERRANOS GROUP		

SEP 4 (TUE) 6:30 PM	BIG BEAR GROUP EXCOM	MEETING
The meeting place rotates. INFO: CHRISTIE WALKER, (909) 866-5006. BIG BEAR GROUP		

SEP 4 (TUE) 7:30 PM	SAN GORGONIO CHAPTER	MEETING
PROGRAM: See front-page notice. Afterwards, SAN GORGONIO SIERRA SINGLES will adjourn for food and drink. COST: \$1 donation requested. PLACE: San Bernardino County Museum, 2024 Orange Tree Lane, Redlands. DIRECTIONS: Exit I-10 at California St. INFO: RALPH SALISBURY, Ralphsalisbury@charter.net. CHAPTER		

SEP 8 (SAT) 8:00 AM	PCT/3N14 TO COUGAR CREST TRAILHEAD	HIKE
A great hike through forest on the Pacific Crest Trail. We'll start at RD 3N14 (2 miles north of Fawnskin. We'll hike up 3N14 to 3N12 and continue on to the PCT. Then we'll head east from Delamar Springs to Cougar Crest Trail and then down to Hwy 38. Approximately 8-9 miles, 750' elevation gain, easy to moderate. Great views of Big Bear Lake. BRING: Ten essentials, 3 quarts water, sturdy boot, lunch and snacks and a sense of adventure. MEET: Cougar Crest Trailhead off Hwy 38 near Fawnskin, ½ mile from Big Bear Discovery Center. At the trailhead parking lot we'll shuttle to Rd 3N14 near Fawnskin. LEADER: TERENCE McCORKLE, Home (760) 252-2194, Cell (760) 412-1683. MOJAVE GROUP		

(Continued on page 6)

(Continued from page 5)

SEPTEMBER 10 – SEPTEMBER 16

*Please read "LIABILITY WAIVER" preceding these listings
(Also refer to Weekly reoccurring Outings and Activities)*

SEP 10 (MON) 7:00 PM SB MOUNTAINS GROUP MEETING
Monthly program meeting. No meeting in August or December. PLACE: St. Richard's Episcopal Church, 28708 Highway 18, Sky Forest. INFO: DAVE BARRIE, (909) 337-0313. SB MOUNTAINS GROUP

****SEP 11 (TUE) FISH CREEK TO SAN GORGONIO PEAK HIKE**
22 mile round trip on an excellent trail. You must be in good shape. We will leave very early and be back late. Space is limited so make your reservation early. BRING lots of everything. ADVENTURE PASS REQUIRED. RESERVATIONS & INFO: LEADER ED WALLACE, (909) 584-9407. BIG BEAR GROUP

SEP 11 (TUE) 7:00 PM CHAPTER CONSERVATION COMMITTEE MEETING
Monthly meeting. Take part in working on important conservation issues. Please come: we need your help! PLACE: San Gorgonio CHAPTER Office, 4079 Mission Inn Ave., Riverside. INFO: KIM FLOYD, Conservation Chair, kimfloyd@verizon.net, (760) 249-5385, or Conservation Coordinator TERRY WOLD, terry.wold@sierraclub.org, (951) 684-6203. CHAPTER

SEP 12 (WED) 7:00 PM MOJAVE GROUP MEETING
Monthly meeting except for July and August. PLACE: Sterling Inn, Regency Room, 17738 Francesca, Victorville. (One block north of Bear Valley Rd. on Ridgecrest.) Enter on Ridgecrest side of the building. INFO: CAROL WILEY, (760) 245-8734, earthlingwiley@webtv.net. MOJAVE GROUP

SEP 15 (SAT) 8:00 AM TAHQUITZ PEAK HIKE
This is a moderate hike, 8½ miles round trip, with 2400' elevation gain. We will be starting at Humber park, and ending up at the lookout station. The first 2 ½ miles is the hardest. It should only take half a day, so if you would like we can have lunch in town. BRING the 10 essentials and 2 to 3 quarts of water and snacks. Space is limited. RESERVATIONS: LEADER MITCH ANDERTON, mitchasn@aol.com, (909)-881-7844. SAN GORGONIO SIERRA SINGLES

SEP 15 (SAT) NATIONAL PUBLIC LANDS DAY KICKOFF EVENT
The Mojave Group is planning an event to help kickoff National Public Lands Day 2007. This event will feature numerous organizations who are involved with public lands; including managers such as the Bureau of Land Management, the National Forest Service, conservation groups, service group and other non-profit groups who regularly use the public lands and help in their protection. There are numerous threats to the public enjoyment of public lands which include the sale of public lands and the commercial use of the land which excludes the general public. Proper management of public lands necessarily involves the public. Learn more about local public lands, the issues and how to become involved. We hope to hold this event in the Mall of Victor Valley (back up place is the Victorville Swap meet). For more information or if your group would like to participate, contact Jenny Wilder, JensOasis@aol.com or 760 220 0730. MOJAVE GROUP

SEPTEMBER 17 – SEPTEMBER 23

*Please read "LIABILITY WAIVER" preceding these listings
(Also refer to Weekly reoccurring Outings and Activities)*

SEP 18 (TUE) 6:00 PM SAN JACINTO VALLEY (HEMET) CONS COMMITTEE MEETING
Monthly conservation meeting. The public is welcome. LOCATION: Call or email for location and directions. CONTACT: SHAULI ROSEN-RAGER, (951) 767-2203, gardens@netzon.net. SAN JACINTO VALLEY (HEMET) CONSERVATION COMMITTEE

SEP 18 (TUE) 6:30 PM BIG BEAR GROUP MEETING
Monthly meeting. INFO: For current program information, please visit the Group web site www.sierraclubbigbeargroup.org. PLACE: Big Bear Discovery Center, 40971 North Shore Dr. (Hwy. 38), Fawnskin. CONTACT: CHRISTIE WALKER, (909) 866-5006. BIG BEAR GROUP

SEPT 18 (TUE) 7:00 PM LOS SERRANOS GROUP MEETING
We will enjoy an evening of food and fun with friends old and new. Share summer vacation stories and photos and bring a friend. PLACE: Educational Building, Upland Presbyterian Church, Euclid Ave at 11th. INFO: MARY ANN RUIZ, (909) 628-1285. LOS SERRANOS GROUP

****SEP 22 (SAT) 8:30 AM SB MTS, FISHERMAN'S CAMP HIKE**
From Crab Flats, you will have an easy descent to Fisherman's Camp and a moderate ascent. Distance: 4 miles RT with an elevation loss and gain of 500 feet. The trail offers views of Lake Arrowhead. It crosses Crab Creek and continues down to Fisherman's Camp Site above Deep Creek where we will have our snack, then hike back up to our cars. BRING: 10 essentials, 2 qts. water, and snack. WEAR: sturdy boots. ADVENTURE PASS REQUIRED. MEET: Call the leader. LEADER, BILLIE WOLFF, (909) 338-2534. SB MOUNTAINS GROUP

SEP 23 (SUN) 6:00 PM MOONLIGHT HIKE HIKE
Come hike in the foothills for several hours by moonlight. (Full moon is September 26.) Hikes are conversationally paced. Between 4 and 5 miles round trip, 800 ft elev. gain. MEET: North parking lot of PFF Bank, Claremont, at NE corner of Indian Hill & Foothill Blvds. BRING: Jacket, flashlight, water, a snack to share mid-hike (optional), and wear sturdy shoes/boots. RAIN CANCELS. LEADERS PATTY & DAVID THORNE, (909) 981-5813. LOS SERRANOS GROUP

SEPTEMBER 24 – SEPTEMBER 30

*Please read "LIABILITY WAIVER" preceding these listings
(Also refer to Weekly reoccurring Outings and Activities)*

SEP 25 (TUE) 7:00 PM SAN GORGONIO CHAPTER EXCOM MEETING
Chapter governance meeting. PLACE: The San Gorgonio Chapter office, 4079 Mission Inn Ave., Riverside. INFO: RALPH SALISBURY ralphsalisbury@charter.net. CHAPTER

SEP 26 (WED) 3:00 PM GROUT BAY TO GRAY'S PEAK HIKE
From the beautiful Grout Bay Picnic Area we will travel up the Gray's Peak Trail, over Grout Creek, then cut off to Gray's Peak Group Campground via Hanna Flat Trail. We will snack and water down at the campground, then reverse our steps back to Grout Bay. Our elevation gain will be roughly 500 feet, covering 4-1/2 miles. BRING water, hiking boots, and of course layered clothing as the evening could get chilly. MEET at the Von's parking lot in Big Bear Lake at 3:00 pm. INFO: LEADER ROBBIE BOS, (909) 866-5006 or CO-LEADER ED WALLACE (909) 584 9407. BIG BEAR GROUP

SEP 29 (SAT) UPPER ARRASTRE CANYON AREA SERVICE OUTING
As part of National Public Lands Day, the Friends of Juniper Flats and the Mojave Group are sponsoring a clean up hike in the Upper Arrastre Canyon area. This is an important riparian area where numerous minor tributaries converge into Arrastre Stream which drains into the Apple Valley/Lucerne Valley area. This area is near the US Forest Boundary and is managed by the Bureau of Land Management. Parking and access is limited, so in order to participate in the clean up hike you must pre-register. Please contact Jenny Wilder at JensOasis@aol.com or 760 220 0730 for more information. MOJAVE GROUP

SEP 30 (SUN) 8:30 AM SAN ANTONIO CANYON CLEANUP SERVICE OUTING
Summer is over and the canyon will be showing the leftovers of summer picnics and parties along the stream. Join us with Forest Service help, to clean up trash. If we get enough strong hands, we may be able to help with graffiti removal also. (carrying buckets of sand for the ranger's sandblaster). Our last cleanup here was a great success, join us again and help keep San Antonio creek clean. Wear sturdy shoes, hat, bring snacks, water and gloves. Bags and pickers will be provided, meet at the Mt Baldy Fire station in the lower canyon. . INFO: Mary Ann Ruiz , ruizmaryann@gmail.com or 909-815-9379. LOS SERRANOS GROUP

OCTOBER 1 – OCTOBER 7

*Please read "LIABILITY WAIVER" preceding these listings
(Also refer to Weekly reoccurring Outings and Activities)*

OCT 2 (MON) 6:00 PM SB MOUNTAINS GROUP EXCOM MEETING
Even numbered months plus November (Feb., Apr., Jun., Aug., Oct., Nov. and Dec.). LOCATION (Unless otherwise noted): Lake Ridge Escrow Conference Room 27236 Blue Jay Mall. INFO: DAVE BARRIE, (909) 337-0313. SB MOUNTAINS GROUP

OCT 2 (TUE) 6:30 PM BIG BEAR GROUP EXCOM MEETING
The meeting place rotates. INFO: CHRISTIE WALKER, (909) 866-5006. BIG BEAR GROUP

OCT 2 (TUE) 7:30 PM SAN GORGONIO CHAPTER MEETING
PROGRAM: See front-page notice. Afterwards, SAN GORGONIO SIERRA SINGLES will adjourn for food and drink. COST: \$1 donation requested. PLACE: San Bernardino County Museum, 2024 Orange Tree Lane, Redlands. DIRECTIONS: Exit I-10 at California St. INFO: RALPH SALISBURY, Ralph.salisbury@charter.net. CHAPTER

OCTOBER 8 – OCTOBER 14

*Please read "LIABILITY WAIVER" preceding these listings
(Also refer to Weekly reoccurring Outings and Activities)*

OCT 8 (MON) 8:00 AM CUCAMONGA PEAK HIKE HIKE
Hike to Cucamonga Peak via Ice House Canyon. Strenuous hike with 3939 feet elevation gain and 11.8 miles round trip. BRING lunch, snacks, and water (about 4 liters) and sturdy hiking boots. An extra layer of clothing would be recommended. MEET at the Mt Baldy Visitor Center at 8:00 am. Carpool from the visitor center to the Ice House Canyon Trail Head. INFO: LEADER DEAN SHIMEK, Dtsierra@msn.com, (909) 899-2795. LOS SERRANOS GROUP

OCT 8 (MON) 7:00 PM SB MOUNTAINS GROUP MEETING
Monthly program meeting. No meeting in August or December. PLACE: St. Richard's Episcopal Church, 28708 Highway 18, Sky Forest. INFO: DAVE BARRIE, (909) 337-0313. SB MOUNTAINS GRP

OCT 9 (TUE) 7:00 PM CHAPTER CONSERVATION COMMITTEE MEETING
Monthly meeting. Take part in working on important conservation issues. Please come: we need your help! PLACE: San Gorgonio CHAPTER Office, 4079 Mission Inn Ave., Riverside. INFO: KIM FLOYD, Conservation Chair, kimfloyd@verizon.net, (760) 249-5385, or Conservation Coordinator TERRY WOLD, terry.wold@sierraclub.org, (951) 684-6203. CHAPTER

OCT 10 (WED) 7:00 PM MOJAVE GROUP MEETING
Monthly meeting except for July and August. PLACE: Sterling Inn, Regency Room, 17738 Francesca, Victorville. (One block north of Bear Valley Rd. on Ridgecrest.) Enter on Ridgecrest side of the building. INFO: CAROL WILEY, (760) 245-8734, earthlingwiley@webtv.net. MOJAVE GROUP

OCT 11 (THU) 8:30 AM PACIFIC CREST TRAIL: 3N14 TO 2N06X HIKE
Easy to Moderate 7-mile (4 hour) round-trip hike on the PCT with about a 500' elevation loss and gain. Access to the trailhead is on 3N14 that leads northwest out of Fawnskin. We will hike west from there along beautiful Holcomb Creek, passing beaver ponds along the way. BRING: ten essentials, 3 quarts of water, sturdy boots, lunch and snacks. AN ADVENTURE PASS WILL BE REQUIRED. MEET at 8:30 in the parking lot at the Cougar Crest Trailhead. INFO: LEADER DICK BANKS, (909) 866-9232 or (714) 814-2546, or CO-LEADER ED WALLACE, (909) 584 9407. BIG BEAR GROUP

OCT 13 (SAT) 9:00 AM PACIFIC CREST TRAIL: 2N01 TO HWY 18 HIKE
A great hike through forest on the PCT east of Big Bear/Baldwin Lake. Start at RD 2N01 (Broom Flat Rd) and hike along the PCT to Hwy 18. Great views of Mohave Desert and Big Bear/Baldwin Lake. About 10-11 miles with 500' gain. BRING: Ten essentials, 3 quarts water, sturdy boots, lunch and snacks and a sense of adventure. MEET: At Hwy 18 (Parking lot just north of Baldwin Lake). Then we'll shuttle to RD 2N01 (Broom Flat Road) and hike back to Hwy 18. LEADER: TERRENCE McCORKLE, Home 7(60) 252-2194, Cell (760) 412-1683. MOJAVE GROUP

OCT 13 (SAT) 9:00 AM CHAMPION LODGEPOLE TO GUNSIGHT HIKE
The Champion Lodgepole Pine is one of the largest known in California. From the Champion trailhead we will have a gentle walk along a stream for just over a 1/2 mile, visiting the Champion. Then we will walk along Siberia Creek to Gunsight, where we will stop for snacks, breakfast or lunch and water, then we head back. Elevation gain will be roughly 900 feet, covering just over 4 miles round trip. This is a fairly easy hike with some great meadows and views, so come along. BRING your hiking boots, extra water, snacks, and layered clothing. MEET at the Von's parking lot in Big Bear Lake at 9:00am. INFO: LEADER ROBBIE BOS, (909) 866-5006,OR CO-LEADER ED WALLACE, (909) 584 9407. BIG BEAR GROUP

OCT 13-15 (SAT-MON) CARRIZO PLAINS SERVICE TRIP
Explore and serve in the Carrizo Plains National Monument: Pronghorn antelope will not jump fences to escape predators but rather attempt to crawl under. Our service on Saturday will modify several sections of fence to facilitate this mobility. Sunday will be, at the choice of the group, either a hike in the Caliente Range or else a tour of popular viewing areas in the plains. Those who can stay on Monday will continue assisting in fence modification. This is an opportunity to combine carcamping, day hiking, exploring, and service in a relatively unknown wilderness. INFO: LEADER: CRAIG DEUTSCHE, (310) 477-6670, deutsche@earthlink.net. CNRCC DESERT COMMITTEE

OCT 14 (SUN) 8:00 AM END OF SUMMER BIKE BIKE RIDE
Come join us for a moderate 30-mile bike ride, from Pat and Jeff's house to Fairmont Park. After the ride we'll have a potluck to discuss the all good times we had during the summer. We will start the ride at 8:00. If you don't want to ride, come join us for the party around 12:00 noon .for good food, good friends, and a good time. BRING your swim suit, and your favorite dish. DIRECTIONS: Contact LEADER: MITCH ANDERTON, mitchasn@aol.com, (909) 881-7844. SAN GORGONIO SIERRA SINGLES

OCT 14 (SUN) 1:00 PM POOL PARTY/POTLUCK SWIM EVENT
OK, it could be more of a social event, but the word swim gets this into the outings calendar. Enjoy the end of the summer with a refreshing swim, good food and company. Also you may want a little exercise first so see the bike ride article above. Bring whatever you want for your food contribution and your beverages. DIRECTIONS: From I-10, exit Tippecanoe, go south (right), which is really Anderson south of the Freeway. Go east (left) on Barton. Go south (right) on Hillcrest St. Continue south on Hillcrest past Lawton; Continue until 11550 Hillcrest St. (right hand side). CONTACT: JEFF or PAT, (909) 799-1090, pjhbd@msn.com. SAN GORGONIO SIERRA SINGLES

OCTOBER 15 – OCTOBER 21

*Please read "LIABILITY WAIVER" preceding these listings
(Also refer to Weekly reoccurring Outings and Activities)*

OCT 16 (TUE) 6:00 PM SAN JACINTO VALLEY (HEMET) CONS COMMITTEE MEETING
Monthly conservation meeting. The public is welcome. LOCATION: Call or email for location and directions. CONTACT: SHAULI ROSEN-RAGER, (951) 767-2203, gardens@netzon.net. SAN JACINTO VALLEY (HEMET) CONSERVATION COMMITTEE

OCT 16 (TUE) 6:30 PM BIG BEAR GROUP MEETING
Monthly meeting. INFO: For current program information, please visit the Group web site www.sierraclubbigbeargroup.org. PLACE: Big Bear Discovery Center, 40971 North Shore Dr. (Hwy. 38), Fawnskin. CONTACT: CHRISTIE WALKER, (909) 866-5006. BIG BEAR GROUP

OCT 16 (TUE) 7:00 PM LOS SERRANOS GROUP MEETING
The San Gabriel Mountains Campaign for conserving our local National Forest wilderness areas has kicked off! Join us for an update of the goals of this campaign, actions that are being considered and an opportunity to lend your voice to this effort. only 14% of the San Gabriel National Forest is wilderness; another 20% qualifies. Let's help with the campaign to designate more wilderness, and also to address ways to improve visitor conditions especially in the East Fork area. PLACE: Educational Building, Upland Presbyterian Church, Euclid Ave at 11th. Refreshments will be served. INFO: MARY ANN RUIZ 909-628-1285. LOS SERRANOS GROUP

****OCT 20 (SAT) 8:30 AM SB MTS, SPLINTERS CABIN TO DEVIL'S HOLE HIKE**
You will hike a scenic section of the Pacific Crest Trail along the Deep Creek Canyon. Difficulty: moderate--Distance: 6 miles RT with 600 foot elevation loss and gain. We will have our snack at Devil's Hole. BRING: 10 essentials, 2-3 qts. water, and snack. WEAR: hiking boots. ADVENTURE PASS REQUIRED. MEET: Call LEADER, BILLIE WOLFF, (909) 338-2534. SB MOUNTAINS GROUP

OCT 20 (SAT) EQUESTRIAN TRAIL HIKE JTNP HIKE
People say the best way to keep a secret is to publish it. Here goes: this is a breezy five or six mile hike on a seldom-used horse trail in a very scenic and seldom-used area of Joshua Tree National Park. Moderate to difficult. See you there! BRING a couple of quarts of water and a lunch. WEAR comfortable boots and maybe a camera. I'm writing this in July, so I have no idea of what the weather will be in late October. We'll discuss clothing when you call. MEET: Call LEADERS: AL & ANN MURDY (760) 366-2932, aemurdy@eee.org. TAHQUITZ GROUP

(Continued on page 7)

(Continued from page 6)

OCT 20-21 (SAT-SUN) GHOST TOWN EXTRAVAGANZA CARCAMP

Come with us to this spectacular desert landscape near Death Valley to explore the ruins of California's colorful past. Camp at the historic ghost town of Ballarat (flush toilets & hot showers). On Sat, do a challenging hike to ghost town Lookout City with expert Hal Fowler who will regale us with tales of this Wild West town. Later we'll return to camp for Happy Hour, a potluck feast and campfire. On Sun, a quick visit to the infamous Riley town site before heading home. Group size strictly limited. RESERVATIONS: Send \$8 per person (Sierra Club), 2 sase, H&W phones, email, rideshare info to LEADER LYGEIA GERARD, P.O. Box 294726, Phelan, CA 92329; (760) 868-2179. CNRCC DESERT COMMITTEE

OCT 20-21 (SAT-SUN) WILD AND SCENIC AMARGOSA CARCAMP

We will travel by car and foot to visit a number of sites in the Tecopa/Shoshone area immediately south of Death Valley: fossil sites, rock alignments, mining relics, pioneer graves, and the outstanding riparian area along the Amargosa River. We will meet in Baker and conclude in Shoshone. Saturday evening will be a car camp with a potluck dinner and campfire. One of the local residents will talk with us about the past and future of this historic area. High clearance 2WD sufficient. Group limit: 12 persons. RESERVATIONS: Contact LEADER CRAIG DEUTSCHE, (310)-477-6670, deutsche@earthlink.net CNRCC DESERT COMMITTEE

OCT 21 (SUN) 8:30 AM CHINO HILLS STATE PARK HIKE

Fall in Chino Hills State Park may not be as welcoming as spring, but still can be beautiful. On a clear fall day, our hike to the top of San Juan Hill will give us views out to the ocean. Bring your binoculars, lunch, water, snacks and a hat as October can still be very sunny and warm in Chino. We will hike 6-8 miles round trip, with 1000 ft elevation gain. INFO: Mary Ann Ruiz, ruizmaryann@gmail.com or 909-815-9379 for LOS SERRANOS GROUP

OCTOBER 22 – OCTOBER 28

Please read "LIABILITY WAIVER" preceding these listings (Also refer to Weekly reoccurring Outings and Activities)

OCT 23 (TUE) 8:30 AM SNOW SUMMIT TO SNOW FOREST LOOP HIKE

We will hike an easy to moderate 7-mile loop between the Snow Summit Ski Area and Snow Forrest (former ski area above Big Bear Village) with a 500' elevation gain. The hike will traverse a combination of roads and trails with many views of Big Bear Lake and the mountains on the other side. BRING: ten essentials, 3 quarts of water, sturdy boots, lunch and snacks. An adventure pass will not be required. MEET at 8:30 AM in Vons parking lot. INFO: Call LEADER, DICK BANKS, (909) 866-9232 or (714) 814-2546 or CO-LEADER ED WALLACE, (909) 584 9407. BIG BEAR GROUP

OCT 23 (TUE) 7:00 PM SAN GORGONIO CHAPTER EXCOM MEETING

Chapter governance meeting. PLACE: The San Gorgonio Chapter office, 4079 Mission Inn Ave., Riverside. INFO: RALPH SALISBURY ralphsalisbury@charter.net CHAPTER

OCT 26 (FRI) 6:00 PM MOONLIGHT HIKE HIKE

Come hike in the foothills for several hours by moonlight. (Full moon is today October 26.) Hikes are conversationally paced. Between 4 and 5 miles round trip, 800 ft elev. gain. MEET: North parking lot of PFF Bank, Claremont, at NE corner of Indian Hill & Foothill Blvds. BRING: Jacket, flashlight, water, a snack to share mid-hike (optional), and wear sturdy shoes/boots. RAIN CANCELS. LEADERS PATTY & DAVID THORNE, (909) 981-5813. LOS SERRANOS GROUP

OCT 26-28 (FRI-SUN) CULP VALLEY, ANZA BORREGO STATE PARK CAR CAMP

Culp Valley, in the Upper Sonoran plant zone, is our base for a hike down the old California Riding and Hiking Trail to Borrego Valley, 3000 feet below. We'll see a variety of plants on the way. On shorter hikes we'll visit local springs. We'll see effects of water sources on plant life and check recovery from a 2002 fire. Primitive campground. OK for passenger cars. Arrive 26th or 27th. INFO: Call LEADER BILL ENGS, (909) 338-1910. SB MOUNTAINS GROUP

OCT 28 (SUN) 7:00 AM SPITLER PEAK TRAIL HIKE

Strenuous 12 mile R/T hike with 2,800' elevation gain. Summary: This is an interesting trail. You begin amongst desert chaparral and even cactus. Then you gradually enter an oak and maple forest and eventually reach a pine forest near the top. However, the neat thing is that the whole area is transitional, and you'll see parts of each climate system everywhere you go. The trail is a steady cardio workout for the first 3-1/2 miles, then the real workout starts. You come into a series of steep switchbacks for the last mile and a half but it evens out near the Pacific Crest Trail, which is 5 miles from the start. The last mile to the top is normal peak-mounting difficulty but well worth the effort. You get a far-reaching 360' view, desert to ocean. MEET: At the trailhead. Take the 74 or the 243 to Mountain Center, then travel East on the 74 for about 3 miles. You will see the turn for Apple Canyon Road and Hurkey Creek Park. Turn left and follow the road for 2-3 miles. You will see a turnout and a sign for the trail on your right. Park in the large area on your right just south of the trailhead. RAIN CANCELS. LEADER: JOHN KUNTZ, (e-mail preferred) jkuntz@earthlink.net, (951) 347-2454. SAN GORGONIO SIERRA SINGLES

OCTOBER 29 – NOVEMBER 4

Please read "LIABILITY WAIVER" preceding these listings (Also refer to Weekly reoccurring Outings and Activities)

There are no scheduled activities or meetings October 29 through November 4.

FUTURE SIERRA CLUB ACTIVITIES

Please read "LIABILITY WAIVER" preceding these listings (Also refer to Weekly reoccurring Outings and Activities)

NOV 23 (FRI) 6:00 PM MOONLIGHT HIKE HIKE

Come hike in the foothills for several hours by moonlight. (Full moon is November 24.) Hikes are conversationally paced. Between 4 and 5 miles round trip, 800 ft elev. gain. MEET: North parking lot of PFF Bank, Claremont, at NE corner of Indian Hill & Foothill Blvds. BRING: Jacket, flashlight, water, a snack to share mid-hike (optional), and wear sturdy shoes/boots. RAIN CANCELS. LEADERS PATTY & DAVID THORNE, (909) 981-5813. LOS SERRANOS GROUP

DEC 1 (SAT) 9:00 AM DEVIL'S PUNCHBOWL TO DEVIL'S CHAIR HIKE

Moderate 7 mile round trip hike with 1,000' elev. gain. SUMMARY: The Devil's Punchbowl is a point where 2 earthquake faults collide, creating upward jutting vertical walls as high as 300 feet. It is a spectacular setting, with the high desert spreading out on one side, and the pine covered Angeles National Forest on the other. The hike takes you along the mostly shaded rim of the Punchbowl, to the dramatic Devil's Chair, a breathtaking overlook with 360 degree views of the geologic formations. A rainbow of rock surrounds the Devil's Chair with pink-streaked chalk-white cliffs, undulating tan crags, chocolate brown slabs, and green-gray ledges. This, combined with the green of the mountains and the blue sky, makes for a memorable image. RAIN CANCELS. LEADER: JOHN KUNTZ, (e-mail preferred) jkuntz@earthlink.net, (951) 347-2454. SAN GORGONIO SIERRA SINGLES

DEC 23 (SUN) 6:00 PM MOONLIGHT HIKE HIKE

Come hike in the foothills for several hours by moonlight. (Full moon is December 23.) Hikes are conversationally paced. Between 4 and 5 miles round trip, 800 ft elev. gain. MEET: North parking lot of PFF Bank, Claremont, at NE corner of Indian Hill & Foothill Blvds. BRING: Jacket, flashlight, water, a snack to share mid-hike (optional), and wear sturdy shoes/boots. RAIN CANCELS. LEADERS PATTY & DAVID THORNE, (909) 981-5813. LOS SERRANOS GROUP

Thank you for Remembering
Your financial contribution means a lot to us. By supporting this chapter, you support the Sierra Club's work in your back yard. This makes you an important part of our work to protect wilderness and wildlife, to improve the quality of life in our cities, and to promote the enjoyment of nature.

NON-SIERRA CLUB ACTIVITIES

The following activities, meeting and events are neither sponsored nor administered by the Sierra Club. The Sierra Club has no information about the planning of these activities and makes no representations or warranties about the quality, safety, supervision or management of such activities. They are published only as a reader service because they may be of interest to the readers of this publication.

NON-SIERRA CLUB

RECURRING WEEKLY & MONTHLY MEETINGS (LOOK IN CALENDAR FOR DATES)

(1ST FRI) 8:00 PM INTERNATIONAL FOLK DANCE FOLK DANCE

NON-SIERRA CLUB EVENT UC RIVERSIDE FOLK DANCE CLUB
Join us for international folk dancing. This is the same group that used to meet at UCR. Meetings are twice monthly: on the 1st and 3rd Fridays. COST: \$2 donation to help pay for the room. PLACE: Highgrove United Methodist Church, 938 W. Center St., Highgrove. DIRECTIONS: Take the Center St. exit from Interstate 215. The church is one half mile east of the freeway on the right. INFO: GAIL SEEKINS, (909) 825-4427, lgseekins@sbcglobal.net.

(1ST SUN) 3:30 PM RIVERSIDE CONTRA DANCE DANCE

NON-SIERRA CLUB EVENT RIVERSIDE CONTRA DANCE
Join us in for an afternoon of contra dance to live music. Dance Instruction at 3:30. Dance from 4:00 to 7:00. Refreshment will be served at the break. Potluck at 7:00, so bring a dish to share. COST: \$9. PLACE: All Saints Episcopal Church, 3847 Terracina Dr., Riverside. DIRECTIONS: The church is on the corner of Terracina and Magnolia between 14th St. and Central Ave. From the 91 freeway, exit on 14th St., go north to Magnolia and turn left. The church will be on your right. Alternatively, exit at Central Ave., go north to Magnolia and turn right. The church will be on your left. INFO: MEG HOFFMAN (951) 359-6984, rdhoyt@juno.com.

(3RD TUE) 6:30 PM SAVE OUR SKYLINE: BOX SPRINGS THRU THE BADLANDS OPEN SPACE MEETING

NON-SIERRA CLUB EVENT SAVE OUR SKYLINE: BOX SPRINGS THRU THE BADLANDS
Help us preserve Moreno Valley's northern skyline and secure a natural open-space corridor between the Box Springs Mountains and the Badlands, including the upper basin of Reche Canyon. We meet at the Coffee Grinder, 23580 Sunnymead Blvd., Moreno Valley. INFO: Dan Clark, (951)924-2454, saveourskyline@roadrunner.com

(3RD WED) 7:30 PM AUDUBON SOCIETY MEETING

NON-SIERRA CLUB EVENT SAN BERNARDINO VALLEY AUDUBON SOCIETY
PROGRAM: A guest speaker presents an illustrated program on wildlife or natural science. Come early to browse the gift tables and socialize. LOCATION: San Bernardino County Museum, 2024 Orange Tree Lane, Redlands. DIRECTIONS: Exit I-10 at California St. INFO: DORI MEYERS, (714) 779-2201.

(3RD FRI) 8:00 PM INTERNATIONAL FOLK DANCE FOLK DANCE

NON-SIERRA CLUB EVENT UC RIVERSIDE FOLK DANCE CLUB
Join us for international folk dancing. This is the same group that used to meet at UCR. Meetings are twice monthly: on the 1st and 3rd Fridays. COST: \$2 donation to help pay for the room. PLACE: Highgrove United Methodist Church, 938 W. Center St., Highgrove. DIRECTIONS: Take the Center St. exit from Interstate 215. The church is one half mile east of the freeway on the right. INFO: GAIL SEEKINS, (909) 825-4427, lgseekins@sbcglobal.net..

(3RD SAT) 5:00 PM EARTHSERVE VEGAN POTLUCK/PROGRAM MEETING

NON-SIERRA CLUB EVENT EARTHSERVE INLAND EMPIRE
Monthly vegan potluck. PROGRAM: Call for info. TIME: 5:00 PM socialize and view diet and animal rights videos; 6:00 PM potluck dinner; 7:00 PM program. BRING own non-disposable table service including cloth napkin and a dish to serve 8 that has no animal products (meat, fish, poultry, dairy, eggs or honey). Just read the labels, or, if you prepare something, bring a recipe card of ingredients. DONATION: \$1 members, \$3 non-members. First time visitors free with potluck dish. LOCATION: University Hall, University of Redlands. DIRECTIONS: From Interstate 10, take the University St. exit in Redlands. Go north on University St. to Campus Ave. and turn right. University Hall is the fifth building on the left. INFO: DICK MORRIS, (951) 682-1196.

SEPTEMBER/OCTOBER CALENDAR OF NON-SIERRA CLUB EVENTS & OUTINGS

SEP 2 (SUN) 3:30 PM RIVERSIDE CONTRA DANCE DANCE

NON-SIERRA CLUB EVENT RIVERSIDE CONTRA DANCE
Join us for an afternoon of contra dance to live music. Dance Instruction at 3:30. Dance from 4:00 to 7:00. Refreshments will be served at the break. Potluck at 7:00, so bring a dish to share. COST: \$9. PLACE: All Saints Episcopal Church, 3847 Terracina Dr., Riverside. DIRECTIONS: The church is on the corner of Terracina and Magnolia between 14th St. and Central Ave. From the 91 freeway, exit on 14th St., go north to Magnolia and turn left. The church will be on your right. Alternatively, exit at Central Ave., go north to Magnolia and turn right. The church will be on your left. INFO: MEG HOFFMAN (951) 359-6984, rdhoyt@juno.com.

SEP 7 (FRI) 8:00 PM INTERNATIONAL FOLK DANCE FOLK DANCE

NON-SIERRA CLUB EVENT UC RIVERSIDE FOLK DANCE CLUB
Join us for international folk dancing. This is the same group that used to meet at UCR. Meetings are twice monthly: on the 1st and 3rd Fridays. COST: \$2 donation to help pay for the room. PLACE: Highgrove United Methodist Church, 938 W. Center St., Highgrove. DIRECTIONS: Take the Center St. exit from Interstate 215. The church is one half mile east of the freeway on the right. INFO: GAIL SEEKINS, (909) 825-4427, lgseekins@sbcglobal.net.

SEP 15 (SAT) 5:00 PM EARTHSERVE VEGAN POTLUCK/PROGRAM MEETING

NON-SIERRA CLUB EVENT EARTHSERVE INLAND EMPIRE
Monthly vegan potluck. PROGRAM: Call for info. TIME: 5:00 PM socialize and view diet and animal rights videos; 6:00 PM potluck dinner; 7:00 PM program. BRING own non-disposable table service including cloth napkin and a dish to serve 8 that has no animal products (meat, fish, poultry, dairy, eggs or honey). Just read the labels, or, if you prepare something, bring a recipe card of ingredients. DONATION: \$1 members, \$3 non-members. First time visitors free with potluck dish. LOCATION: University Hall, University of Redlands. DIRECTIONS: From Interstate 10, take the University St. exit in Redlands. Go north on University St. to Campus Ave. and turn right. University Hall is the fifth building on the left. INFO: DICK MORRIS, (951) 682-1196.

SEP 18 (TUE) 6:30 PM SAVE OUR SKYLINE: BOX SPRINGS THRU THE BADLANDS OPEN SPACE MEETING

NON-SIERRA CLUB EVENT SAVE OUR SKYLINE: BOX SPRINGS THRU THE BADLANDS
Help us preserve Moreno Valley's northern skyline and secure a natural open-space corridor between the Box Springs Mountains and the Badlands, including the upper basin of Reche Canyon. We meet at the Coffee Grinder, 23580 Sunnymead Blvd., Moreno Valley. INFO: Dan Clark, (951)924-2454, saveourskyline@roadrunner.com

SEP 19 (WED) 7:30 PM AUDUBON SOCIETY MEETING

NON-SIERRA CLUB EVENT SAN BERNARDINO VALLEY AUDUBON SOCIETY
PROGRAM: A guest speaker presents an illustrated program on wildlife or natural science. Come early to browse the gift tables and socialize. LOCATION: San Bernardino County Museum, 2024 Orange Tree Lane, Redlands. DIRECTIONS: Exit I-10 at California St. INFO: DORI MEYERS, (714) 779-2201.

SEP 21 (FRI) 8:00 PM INTERNATIONAL FOLK DANCE FOLK DANCE

NON-SIERRA CLUB EVENT UC RIVERSIDE FOLK DANCE CLUB
Join us for international folk dancing. This is the same group that used to meet at UCR. Meetings are twice monthly: on the 1st and 3rd Fridays. COST: \$2 donation to help pay for the room. PLACE: Highgrove United Methodist Church, 938 W. Center St., Highgrove. DIRECTIONS: Take the Center St. exit from Interstate 215. The church is one half mile east of the freeway on the right. INFO: GAIL SEEKINS, (909) 825-4427, lgseekins@sbcglobal.net.

OCT 5 (FRI) 8:00 PM INTERNATIONAL FOLK DANCE FOLK DANCE

NON-SIERRA CLUB EVENT UC RIVERSIDE FOLK DANCE CLUB
Join us for international folk dancing. This is the same group that used to meet at UCR. Meetings are twice monthly: on the 1st and 3rd Fridays. COST: \$2 donation to help pay for the room. PLACE: Highgrove

(Continued on page 8)

(Continued from page 7)

United Methodist Church, 938 W. Center St., Highgrove. DIRECTIONS: Take the Center St. exit from Interstate 215. The church is one half mile east of the freeway on the right. INFO: GAIL SEEKINS, (909) 825-4427, lgseekins@sbcglobal.net.

OCT 7 (SUN) 3:30 PM RIVERSIDE CONTRA DANCE DANCE
NON-SIERRA CLUB EVENT RIVERSIDE CONTRA DANCE
 Join us in for an afternoon of contra dance to live music. Dance Instruction at 3:30. Dance from 4:00 to 7:00. Refreshment will be served at the break. Potluck at 7:00, so bring a dish to share. COST: \$9. PLACE: All Saints Episcopal Church, 3847 Terracina Dr., Riverside. DIRECTIONS: The church is on the corner of Terracina and Magnolia between 14th St. and Central Ave. From the 91 freeway, exit on 14th St., go north to Magnolia and turn left. The church will be on your right. Alternatively, exit at Central Ave., go north to Magnolia and turn right. The church will be on your left. INFO: MEG HOFFMAN (951) 359-6984, rdhoyt@juno.com.

OCT 13 (SAT) FRIENDS OF JUNIPER FLATS ANNUAL MEETING MEETING
NON-SIERRA CLUB EVENT FRIENDS OF JUNIPER FLATS
 The Friends of Juniper Flats will hold their Annual Meeting at the historic Rock Springs Ranch in the Juniper Flats Area. You must be a member in good standing (dues current) to attend the meeting. Please contact Dean Greenwalt at rocksprings@earthlink.net or Jenny Wilder Jensoasis@aol.com (760 220 0730) for details. Send your dues (\$5) to the Treasurer, Friends of Juniper Flats, P.O. Box 83, Apple Valley, CA 92308.

OCT 16 (TUE) 6:30 PM SAVE OUR SKYLINE: BOX SPRINGS THRU THE BADLANDS OPEN SPACE MEETING
NON-SIERRA CLUB EVENT SAVE OUR SKYLINE: BOX SPRINGS THRU THE BADLANDS
 Help us preserve Moreno Valley's northern skyline and secure a natural open-space corridor between the Box Springs Mountains and the Badlands, including the upper basin of Reche Canyon. We meet at the Coffee Grinder, 23580 Sunnymead Blvd., Moreno Valley. INFO: Dan Clark, (951)924-2454, saveourskyline@roadrunner.com

OCT 17 (WED) 7:30 PM AUDUBON SOCIETY MEETING
NON-SIERRA CLUB EVENT SAN BERNARDINO VALLEY AUDUBON SOCIETY
 PROGRAM: A guest speaker presents an illustrated program on wildlife or natural science. Come early to browse the gift tables and socialize. LOCATION: San Bernardino County Museum, 2024 Orange Tree Lane, Redlands. DIRECTIONS: Exit I-10 at California St. INFO: DORI MEYERS, (714) 779-2201.

OCT 19 (FRI) 8:00 PM INTERNATIONAL FOLK DANCE FOLK DANCE
NON-SIERRA CLUB EVENT UC RIVERSIDE FOLK DANCE CLUB
 Join us for international folk dancing. This is the same group that used to meet at UCR. Meetings are twice monthly: on the 1st and 3rd Fridays. COST: \$2 donation to help pay for the room. PLACE: Highgrove United Methodist Church, 938 W. Center St., Highgrove. DIRECTIONS: Take the Center St. exit from Interstate 215. The church is one half mile east of the freeway on the right. INFO: GAIL SEEKINS, (909) 825-4427, lgseekins@sbcglobal.net.

OCT 20 (SAT) 5:00 PM EARTHSAVE VEGAN POTLUCK/PROGRAM MEETING
NON-SIERRA CLUB EVENT EARTHSAVE INLAND EMPIRE
 Monthly vegan potluck. PROGRAM: Call for info. TIME: 5:00 PM socialize and view diet and animal rights videos; 6:00 PM potluck dinner; 7:00 PM program. BRING own non-disposable table service including cloth napkin and a dish to serve 8 that has no animal products (meat, fish, poultry, dairy, eggs or honey). Just read the labels, or, if you prepare something, bring a recipe card of ingredients. DONATION: \$1 members, \$3 non-members. First time visitors free with potluck dish. LOCATION: University Hall, University of Redlands. DIRECTIONS: From Interstate 10, take the University St. exit in Redlands. Go north on University St. to Campus Ave. and turn right. University Hall is the fifth building on the left. INFO: DICK MORRIS, (951) 682-1196.

NOV 4 (SUN) 3:30 PM RIVERSIDE CONTRA DANCE DANCE
NON-SIERRA CLUB EVENT RIVERSIDE CONTRA DANCE
 Join us in for an afternoon of contra dance to live music. Dance Instruction at 3:30. Dance from 4:00 to 7:00. Refreshment will be served at the break. Potluck at 7:00, so bring a dish to share. COST: \$9. PLACE: All Saints Episcopal Church, 3847 Terracina Dr., Riverside. DIRECTIONS: The church is on the corner of Terracina and Magnolia between 14th St. and Central Ave. From the 91 freeway, exit on 14th St., go north to Magnolia and turn left. The church will be on your right. Alternatively, exit at Central Ave.,

go north to Magnolia and turn right. The church will be on your left. INFO: MEG HOFFMAN (951) 359-6984, rdhoyt@juno.com.

NOV 4 (SUN) 3:30 PM RIVERSIDE CONTRA DANCE DANCE
NON-SIERRA CLUB EVENT RIVERSIDE CONTRA DANCE
 Join us in for an afternoon of contra dance to live music. Dance Instruction at 3:30. Dance from 4:00 to 7:00. Refreshment will be served at the break. Potluck at 7:00, so bring a dish to share. COST: \$9. PLACE: All Saints Episcopal Church, 3847 Terracina Dr., Riverside. DIRECTIONS: The church is on the corner of Terracina and Magnolia between 14th St. and Central Ave. From the 91 freeway, exit on 14th St., go north to Magnolia and turn left. The church will be on your right. Alternatively, exit at Central Ave., go north to Magnolia and turn right. The church will be on your left. INFO: MEG HOFFMAN (951) 359-6984, rdhoyt@juno.com.

Fund Appeal Donors

Thanks to the generous donors to the San Gorgonio Chapter's March 2007 fund appeal. Your support makes our conservation work possible. Gifts received between June 9 and July 31 are acknowledged here.

- | | |
|--------------------------|-----------------|
| Lodgepoles | G.B. Millard |
| Ted Belden | Richard Schmitt |
| Anthony & Mark Egan | Derek Starr |
| Michael & Meryl McDowell | Milton Winer |

Permutations of Politics

Are you satisfied with the level of commitment exhibited by your elected officials? I think the answer is obvious. And our Sierra Club prescription is to get involved.

During the Executive Committee meeting, members provided questions for those running for office of concern.

What concerns would you like addressed by prospective politicians?

Write the Chapter office or send an e-mail to Elizabeth Anthony as elzantho1@aol.com

Chapter Executive Committee

San Gorgonio Chapter Website
<http://sangorgonio.sierraclub.org>

Chair
 *Ralph Salisbury 951-686-4141
ralphsalisbury@charter.net

Vice-Chair
 *Bill Cunningham 909-793-9558

Secretary
 *Rick Estes 951-678-7406
Rickestes_92595@yahoo.com

Treasurer
 *Ladd Seekins 909-825-4427
lgseekins@sbcglobal.net

Conservation Chair
 *Kim Floyd 760-249-5385
kimffloyd@verizon.net

Conservation Education Chair
 Open

Membership Chair
 *Linda Jones 951-684-5846
lindareej@msn.com

24-Hour Hotline 951-684-6203 Box 4

Outings Chair
 *Ralph Salisbury 951-686-4141
ralphsalisbury@charter.net

Political Chair
 Open

SC Council Delegate
 *Ralph Salisbury
ralphsalisbury@charter.net

CNRCC Delegates
 *George Hague 909-924-0816
 Steve Farrell 909-338-2637

Group Representatives
Big Bear Group
 *Don Jordan 909-585-8786
donjordan@silvercloud.net

Los Serranos Group
 *David Thorne 909-949-8046
dcthorne1@aol.com

Mojave Group
 *Jenny Wilder 760-220-0730
jensoasis@aol.com

Moreno Valley
 *George Hague 951-924-0816

San Bernardino Mtns. Group
 *Dave Barrie 909-337-0313
m.barrie@worldnet.att.net

Tahquitz Group
 *Kathryn Kelley 760-321-5778

Wilderness Skills/Leadership Training
 Ralph Salisbury 951-686-4141
 24-Hour Hotline 951-684-6203 Box 5

Chapter Conservation Issue Chairs

Desert Issues — High Desert
 Kim Floyd 760-249-5385
Kimffloyd@verizon.net

Desert Issues — Low Desert
 Joan Taylor

Desert — Eagle Mountain
 Donna Charpiet 760-392-4722
laronna@earthlink.net

Forestry Issues — Mountaintop RD
 East—Erv Nichols 909-878-3313
 West—Steve Farrell 909-338-2637
Steve_and_valerie@compuserve.com

Forestry Issues San Jacinto RD
 Holly Owen 951-303-7922
 Joyce Burk 760-252-3820

Forestry
 Donna & Larry Charpiet 760-392-4722
laronna@earthlink.net

Water Issues
 Terry Wold 951-684-6203
 Steve Farrell 909-338-2637

California Wild Heritage Campaign
 Joyce Burk 760-252-3820

Group Directory

Big Bear Group
 Chair — Ed Wallace 909-584-9407
 Meets 3rd Tuesday, Discovery Center
 North Shore, 6:30 p.m.
www.sierraclubbigbeargroup.org

Los Serranos Group
 Chair — David Thorne 909-949-8046
dcthorne1@aol.com
 Meets 3rd Tuesday Upland Presbyterian
 Church, Ed Building 7 p.m.

Mojave Group
 Chair — Carol Wiley 760-245-8734
 Meets 2nd Wednesday except Jul. & Aug.
 Sterling Inn, Regency Room,
 17738 Francesca, Victorville 7 p.m.
 (just north of Bear Valley and Ridgecrest)

Moreno Valley Group
 Chair — Michael Millspaugh 951-653-2068

Mountains Group
 Chair—Dave Barrie 909-337-0313
m.barrie@worldnet.att.net
 Meets 2nd Monday 7:00 p.m.
 Except Aug & Dec. St Richard's Episcopal
 Church, 28708 Hwy 18, Sky Forest

Tahquitz Group
 Chair — Kathryn Kelley 760-321-5778

Section Directory

Sierra Singles
 Chair — Ralph Salisbury 951-686-4141
 Meets 1st Tuesday,
 San Bernardino County Museum

Natural Science Section
 Co-Chairs —Janice/Brian Elliott
 909-985-2395

UCR EXTENSION COURSES

(Continued from page 12)

Birds of Anza-Borrego

\$142 each with PINE discount (072-SCF-F25)

When: Fri., 7-9 p.m., Sat., 7 a.m.-5 p.m. & Sun., 8 a.m.-2 p.m. Oct. 12, 13 & 14 (3 meeting/s)

Where: Field Study

Note: For birders of all abilities. Visitors not permitted. Participants meet at the Anza-Borrego Desert Natural History Association nature store, 652 Palm Canyon Drive in downtown Borrego Springs.

Optional text: "A Field Study of Birds of North America, 5th edition," Jon L. Dunn & Jonathan K. Alderfer (0792253140)

Instructor: Kurt Leuschner, M.S., Wildlife Ecology, Associate Professor of Natural Resources, College of the Desert.

Oaks of Southern California

\$110 each with PINE discount (072-SCF-F32)

When: Fri., 6-8 p.m. & Sat., 8 a.m.-5 p.m. Oct. 12 & 13 (2 meeting/s)

Where: University Extension Center - Room TBA, RIVERSIDE

Note: Participants should be prepared for several light hikes in coastal, mountain and desert settings. Please bring water, lunch and snacks, and be prepared for the day's weather. Students are responsible for their own transportation. Additional details will be provided upon enrollment.

Optional text: "Oaks of California," Pavlik, Muick, Johnson and Popper (0-9628505-1-9)

Instructor: Michael J. Wangler, M.S., Professor of Geography, Cuyamaca College, El Cajon.

Natural and Cultural History of the Mojave National Preserve: Clark Mountain to Mitchell Caverns -- The High Country

\$264 each with PINE discount (072-SCF-F31)

When: Fri., 5-8 p.m., Sat., 9 a.m.-4 p.m. & Sun., 9 a.m.-3 p.m. Oct. 26, 27 & 28 (3 meeting/s)

Where: Desert Studies Center at Zzyzx, Baker

Note: This field study is based at the Desert Studies Center (of California State University) located within the Preserve at Soda Springs (Zzyzx), about a three-hour drive from Riverside. Saturday and Sunday are spent in the field (carpooling is encouraged). Sunday's field trip will end at about 3 p.m. at Mitchell Caverns, about a 3.5-hour drive from Riverside. The course fee includes two nights' lodging at the Center (dormitory rooms & some couples rooms), and meals starting with breakfast Saturday through lunch on Sunday. Hors d'oeuvres and beverages will be provided Friday evening before class. Upon enrollment, participants will be sent information about the Center and what to bring with them.

Instructor: Robert Fulton, M.A., Manager, Desert Studies Center, California State University.

Geology and Natural History of Northern Death Valley

Note: Students must be capable of moderate hiking (up to five miles). No previous background in geology is required. The course is a companion to Geology X451, Geology and Natural History of Death Valley, which is not a prerequisite. Transportation to Death Valley is the responsibility of the student. Information on where to camp and alternate accommodations will be sent upon enrollment. Visitors not permitted.

Physical Science Course for Certificate in Field Ecology

Elective for Specialized Study Program in Field Geology

Instructor: Gary Arce, M.S., Instructor, Geology, Victor Valley College and Mentor Teacher, Apple Valley High School.

Date/Time: Sat., 9 a.m.-6 p.m. & Sun., 8 a.m.-4 p.m. Nov. 10 & 11 (2 meeting/s)

Reg #: 072-SCF-F26

Fee: \$155 / \$140 each for couples and family members / \$124 each with PINE discount

Location: Field Study, Field Study

Introduction to Bird-Banding

\$165 each with PINE discount (072-SCF-F19)

Prerequisite: Basic bird identification skills.

When: Tues., 5:30-9:30 p.m., Sat., 6 a.m.-3 p.m. & Sun., 6 a.m.-3 p.m. Nov. 13, 17 & 18 (3 meeting/s)

Where: University Extension Center - Room TBA, RIVERSIDE

Note: Visitors not permitted. A course syllabus and map to the banding location will be provided.

Instructor: Stephen J. Myers, Wildlife Biologist/Ornithologist, AMEC Earth and Environmental, Riverside.

Optional text: "No text required.,"

Is Recycled Paper in Trouble?

The growing presence of recycled paper has led many people to believe that all paper is now made from recycled materials. This unfortunate misconception has actually decreased demand for recycled paper, causing manufacturers to produce less. As a result, more than 90 percent of printing and writing paper still comes from virgin tree fiber.



The benefits of producing paper from recycled fibers are many: fewer trees cut down, less water and energy consumed, less pollution generated. And now that studies have shown today's recycled paper products are comparable to conventional products in quality, performance, and cost, the case for buying recycled is stronger than ever. To help expand this market while meeting your needs and budget, ask these questions when shopping for paper products:

What is the percentage of recycled content?

Recycled paper contains varying percentages of **post-consumer** waste (paper that has been used and recycled by the consumer); the remaining recycled content derives from miscellaneous paper mill scraps. While any recycled paper is generally better than non-recycled, paper with a higher percentage of post-consumer content is the best choice. If a percentage is not listed, contact the manufacturer.

Where did the paper originate?

If you cannot buy a paper product that is 100 percent recycled, look for the **Forest Stewardship Council (FSC)** certification label. This paper comes from forests managed in an environmentally responsible manner.



What about "tree-free" alternatives?

Paper doesn't have to come from wood pulp; fibers from hemp, kenaf, flax, cotton, banana stalks, and other plant-based materials can be used to produce paper with fewer chemicals and less energy. Tree-free paper is generally more expensive than its conventional counterpart, but is available from a variety of companies. As with conventional paper, look for a product with high post-consumer recycled content.

How was the paper processed?

Papers (even tree-free ones) are often bleached with chlorine or chlorine derivatives that form dioxin—a known carcinogen—and other compounds that pollute local air and water supplies. Look for products labeled either **processed chlorine free (PCF)** or **totally chlorine free (TCF)**.

Visit the Union of Concerned Scientists at <http://www.ucsusa.org>

Also visit the Recycled Paper Coalition for a recycled paper fact Sheet at <http://www.conservatree.org/paper/PaperTypes/RPCrecypprFactSheet/pdf>

Palm and Pine Fund Appeal

It's time to consider your contribution to the San Geronio Chapter's Fall Fund Appeal. A return envelope has been inserted in this issue of the Pam and Pine for your check.

Did you know that the chapter receives only \$1 each year from your Sierra Club membership dues for publication of your Chapter Newsletter?

The Fall Fund Appeal is specifically designated to help make up the difference between our actual costs and the dollars received. Your contribution allows continued publication of the Inland Empire's most comprehensive environmental newspaper.

The Pal and Pine is the main source of information for those participating in our Outings program. In fact on the average about 30% of the total newspaper is devoted to Outings.



Earth Share
OF CALIFORNIA

*One Environment...
One Simple Way to Care for it*

Join us in protecting the future by doing your share today.

How can you choose between the eagle and the buffalo? Between the elephants and the whales?

Between drinking clean water and breathing clean air? Between parks and beaches? How can you choose? Would there be a right choice?

Now there's a way to help not just one, but all these things. It's called Earth Share of California — the world's leading environmental and conservation charities working together.

Through Earth Share of California you can make a one-time gift, or a payroll deduction donation that helps every day to preserve and protect the environment — locally, regionally, nationally, and globally.

Earth Share is not part of your employer's workplace giving campaign? We'd like to do something about that. Call Ladd Seekins at 909-888-0161 weekdays or 909-825-4427 evenings and weekends. Address e-mail to iw-fladd@eee.org.

Moreno Valley

(Continued from page 4)

their dairies to residential/commercial uses. The County is apparently planning on initiating a General Plan Overlay amendment which would encompass an area north of the Ramona Expressway north to include parts of the SJWA; east to Bridge Street; and west to include part of The Villages of Lakeview project. As we understand the concept, the overlay would mean that when the dairies, or Lewis Homes, or the Mottes, decide to process their specific plans through the County, they would not need to do a general plan amendment, as currently required. The agricultural land would automatically become residential. This is a very bad idea for the environment and the SJWA as the County is wrongly assuming that all of this development will have NO impacts on the SJWA. As an additional insult,

the developer stood up at the Planning Commission and testified that there were no faults, subsidence, or liquifaction within seven miles of his project. Anyone who has any information about the San Jacinto Valley knows that it is riddled with all of these problems, and it is inaccurate to assume that future planning and development decisions can be made in a vacuum without first studying these hazards. For more information on the Motte Ranch Specific Plan (SP366) project, please contact: Matt Straite, Riverside County Planning Department, at (951) 955-0545, e-mail: MSTRAITE-@rctlma.org More information is located on the Planning Department web site, Planning Commission Agenda for July 11, 2007, Item 6.2 at: http://www.tlma.co.riverside.ca.us/planning/content/hearings/pc/2007/pc071107_agenda/pc071107.html The Staff Report and Public Hearing Presentation are available. You can also refer

to the February 21, 1007 Staff Report which is somewhat different at: http://www.tlma.co.riverside.ca.us/planning/content/hearings/pc/2007/pc022107_agenda/pc022107.html (Information on this project was submitted by Sue Nash.)

Lake Perris State Recreation Area (LPSRA) has more to offer than "just a lake." A wide variety of recreation opportunities are available year-round--bicycling, hiking, horseback riding, and lake activities for example. One of California's four Regional Indian Museums is also located at the LPSRA. Volunteers are needed to help provide visitors with a richer State Park experience by guiding general nature walks, flower walks, bird walks, and bike hikes. Volunteers are also needed for the museum, which is open Wednesdays, Saturdays and Sundays. On Tuesdays and Thursdays the museum provides programs for school students of all

ages. For more information on these volunteers opportunities, call Ellen Absher, State Park Interpreter II at (951) 657-0676.

The city of Moreno Valley Parks and Community Services Department is sponsoring a hike on October 27, Hike to the Top—Box Springs M Trail. They will meet at 8:30 a.m. at Canyon Springs High School, 23100 Cougar Canyon Drive, Moreno Valley. Call the department at (951) 413-3703 for more information.

Have you thought about volunteering for the Moreno Valley Group? There are many issues to follow here in Moreno Valley and we are looking for more volunteers. Any amount of time would be appreciated. For more information on group meetings and volunteering with the Moreno Valley Group, contact Ann McKibben at (951) 924-8150 or movalleygroup@yahoo.com, Theresa Carson, (951) 242-4752 or George Hague at (951) 924-0816.



Huts and Lodges

Want to escape to the mountains? Try visiting one of the Sierra Club Huts or Lodges. Stay overnight at the best rates in town.

Keller Ski Hut, built in 1938 is at an elevation of 6800 feet on Highway 18 between Running Springs and Big Bear in the San Bernardino Mountains, across from Snow Valley Ski Area. An adventure pass is required. There are two rustic living/dining rooms; fully equipped kitchen with cookware, dishes, utensils, stove, refrigerator; two dormitory sleeping lofts with 30 sleeping pads on floors; and bathroom. On open weekends or work parties/overseer training, call Jacqueline Meese (714-427-0457). Keller rates: \$2.00 Day; \$8.00 overnight.

Harwood Lodge, built in 1930 to honor Aurelia Harwood, the first woman president of the Sierra Club is located in the San Gabriel Mountains on Mt. Baldy at 6000 feet elevation. It is about 2 miles after Icehouse Canyon and across from Snow Crest Park on the way up Mt. Baldy Road. The driveway on the right is shared with the Zen Center. There is a fully equipped kitchen, dormitory sleeping facilities and restrooms with showers. On Open Weekends, no reservation is required. Check in with the Overseer between 10:00 a.m. Saturday until 3:00 p.m. Sunday. Rates: \$5.00 Day; \$12.00 overnight.

San Antonio Ski Hut, built by the Ski Mountaineers in 1937. At 8200 feet, it is reached by a steep 3 mile hike with 2200 feet of gain. Rates: \$1.00 Day; \$10.00 overnight.

Open weekends for these huts and lodges can be found by visiting the Angeles Chapter Website (access through sierraclub.org) or in the Angeles Schedule of Activities.

How Does Your Sunscreen Rank?

Find Out in EWG's New Database

Summer's here and we all want to avoid sunburn and skin cancer. So just slather on sunscreen, right?

Well, not just any sunscreen. Search EWG's sunscreen safety database (<http://www.cosmeticdatabase.com/sunscreens/summary.php>) to find out what's safest and most effective for you and your family.

There are no federal sunscreen safety standards in the U.S., even though the FDA has been drafting them for the past 29 years. And did you know that SPF ratings only cover UVB rays, which cause burns, but not UVA rays, which raise skin cancer risk?

Our sunscreen database (<http://www.cosmeticdatabase.com/special/sunscreens/summary.php>) is the result of 18 months of research, and we found that 84% of 783 sunscreen products offer inadequate protection from the sun or contain ingredients with significant safety concerns. Find out what's safest and most effective for you, and especially for your kids' delicate skin. Then go have fun in the sun!

The popularity of the database has caused a huge spike in EWG's website traffic -- so check it out today, but bear with us if it takes a minute to load. We're a small non-profit doing our best to meet the demand. Thanks for your patience! And special thanks to those who sent us your sunscreen information -- you made this project possible.

When you go the Environmental Working Group's website (<http://www.ewg.org>) you'll be able to 1) Search for your sunscreen, 2) Find Best & Worst Sunscreens, 3) Find Top Sellers Sunscreen or 4) Watch a background Video: EWG's Jane Houlihan on CBS's The Early Show.



Mojave Group

By Jenny Wilder, Chair

The Mojave Group is fortunate to have some very dedicated individuals and a wonderful array of public lands to enjoy. Numerous members work in the background on environmental issues that affect them. They write letters to the editor and to different agencies and become involved in their local neighborhood. They don't always attend distant meetings, they may not go on outings, but they do what they can to reduce global warming and they conserve energy in every way possible. They pay their Sierra Club dues and often read the newsletters and magazines. I applaud their often unnoticed efforts and appreciate their contribution for a better world.

During the summer months the Mojave Group Excom has been relatively quiet, but one of our newest Outings Leaders, Terrance McCorkle has kept up with monthly hikes. He continues his hikes into the fall with hikes in the San Bernardino Mountains on Sept 8 and Oct 13.

Estelle and Carol enjoyed a 'once in a lifetime' trip to Alaska. They traveled by themselves in Estelle's truck and enjoyed a different adventure everyday for 2 months. Jenny kept up with the Thursday morning Farmer's Market Sierra Club table. Kim continued to keep up to date on various conservation issues including the Mojave River Basin, San Bernardino County Off Highway Vehicle Ordinance, major housing developments, and much more. Kim can be reached at kimffloyd@verizon.net or 760 249 5385. Cherish, with help from a number of other group members got the Mojave News and Views out to the membership in June.

Allison Hotchkiss has been working on landscape plans for the Carol Wiley Appreciation Garden. In Sept we hope to present this plan to the Victor Valley College and in October / November we will help with the clean up of the site. Contact Allison at 760 242 8175.

At present we are planning a National Public Lands Day event with the help of a new volunteer, Genia Robinson. Genia has attended several meetings and has been eager to 'step up to the plate.' She is contacting numerous groups to find out which ones will be interested in joining us in a National Public Lands Day Kickoff event on Sept 15 in the Mall (or swapmeet if that Mall doesn't work out). We are fortunate to have several very different and interesting public lands within easy reach of the Victor Valley. We have the San Bernardino and Angeles National Forests, numerous Wilderness areas, the East Mojave National Preserve, Juniper Flats and many other "limited use areas" managed by the Bureau of Land Management as well as 5 Off Highway Open areas.

This winter we hope to encourage many others to enjoy some of these wonderful places. We are in the process of pulling together a series of Youth in the Desert hikes to help youth and their families better understand and appreciate the desert. The hikes will be relatively short, local desert hikes which clearly demonstrate some of the interesting features of the Mojave Desert such as the desert riparian area, historic/local mining, Native American history/sites, etc. For more information on the Youth in the Desert Hikes contact Jenny Wilder (Jensoasis@aol.com or 760 220 0730).

We are also putting together a Wilderness Committee to help with the exploration and monitoring of our many local Wilderness areas and proposed wilderness areas. For more information on the Wilderness Committee email or call Estelle Delgado (estelledelgado@verizon.net or 760 241 7327).

Last March, many of our members were trained as Site Stewards under the California Ar-

chaeological Site Stewardship Program (CASSP). Jenny received her assignment in the Juniper Flats Area, Estelle and Carol will soon be getting assignments in Wilderness areas. Several other Mojave Group members were also trained and await their assignments. We are very excited about helping monitor the numerous important archaeological sites in the Desert. For more information on the Site Steward program visit the CASSP website (<http://www.cassp.org/>) or contact Chris and Beth Padon at 562 432 1801 and/or your local BLM or Forest Service archaeologist.

Want to join in on the fun with the Mojave Group? Come to our 'business' meeting on September 12, 2007 or our program meeting on October 10, 2007. The scheduled program for October is about alternative fuels-bio diesel fuel presented by Darryl Evey.



Last February 8, a big retirement party was held for long-time Mojave Group Chair Carol Wiley. Apparently in the Mojave Group "retirement" means moving from Chair to Vice-Chair.

Membership

YES, I want to help safeguard our nation's Precious natural heritage. My check is enclosed.

Name _____

Address _____

City _____

State _____ ZIP _____

E-mail _____

Check enclosed, made payable to Sierra Club
MasterCard Visa Exp Date ____/____/____
Cardholder Name _____

Card # _____

Contributions, gifts and dues to the Sierra Club are not tax deductible; they support our effective, citizen-based advocacy and lobbying efforts. Your dues include \$7.50 for a subscription to *Sierra* magazine and \$1.00 for your Chapter newsletter.

MEMBERSHIP CATEGORIES

	INDIVIDUAL	JOINT
INTRODUCTORY	\$25	
REGULAR	\$39	\$47
SUPPORTING	\$75	\$100
CONTRIBUTING	\$150	\$175
LIFE	\$1000	\$1250
SENIOR	\$24	\$32
STUDENT	\$24	\$32
LIMITED INCOME	\$24	\$32

F94

W-1200



Sierra Club

P.O. Box 52968, Boulder, CO
80322-2968

Shopping for Energy Efficiency

Buying energy-efficient home appliances can go a long way toward reducing your household's electricity costs and contribution to global warming. However, when faced with manufacturers' claims about energy use and the jargon used on product labels, it can be hard to determine which model will best meet your needs. Here is what to watch—or watch out—for:

Energy Star. This designation and its now-familiar logo are awarded by the U.S. Department of Energy and the U.S. Environmental Protection Agency to the most energy-efficient products in more than 50 categories, including electronics, appliances, lighting, and office equipment. Product categories are judged by different efficiency standards; the Energy Star website (see the related links) lists those requirements and all of the models that earned Energy Star status.



Energy Guide. This large, yellow-and-black label is required by the Federal Trade Commission on major appliances such as furnaces, refrigerators, water heaters, and dishwashers whose operating costs vary widely between brand and model. It is not required on appliances with little model-to-model variation in operating costs, such as clothes dryers, or small appliances such as coffee makers. The Energy Guide informs consumers of the total energy an appliance can be expected to consume each year, how its energy use compares with similar models (for example, refrigerators with capacities of 18.5 to 20.4 cubic feet), and its estimated annual operating cost. The label

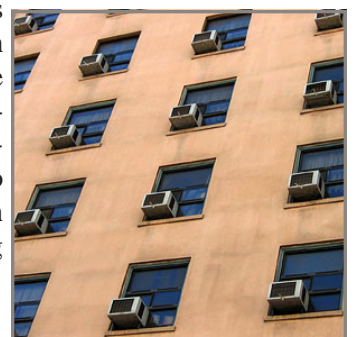


also indicates whether the product is Energy Star-rated.

BTU (British thermal unit). An air conditioner's capacity is described in terms of the amount of heat it can remove per hour, expressed as BTUs. In other words, the higher the BTUs, the more heat the unit can remove. BTUs are not a measure of energy efficiency, however; an air conditioner that has a capacity larger than the room in which it is placed, for example, will not be effective in removing humidity, leaving the room feeling damp and clammy. For this reason it is important to choose a unit with a capacity appropriate to your living space (see the related links for a sizing guide).

EER (energy efficiency ratio). An air conditioner's EER equals the number of BTUs it removes from the surrounding air each hour divided by the number of watts it uses. The higher the EER, the more efficient the unit. Central air conditioners are rated by **seasonal energy efficiency ratio (SEER)**, which measures efficiency over a longer time frame.

"Energy Saver," "Energy Miser," etc. Let the buyer beware—some appliances have names or come with special settings that suggest they will reduce energy use. While this may be true, there are no regulations governing such claims. Look for the Energy Star logo instead, and use the Energy Guide label to choose the model with the lowest operating cost.



The Desert Institute Classes

The Desert Institute presents outdoor adult weekend classes for Fall 2006. Come to Joshua Tree National Park to learn with the experts about this exciting desert wonderland. These classes are open to all skill levels. Call for brochure, information and registration: 760-367-5535, Fax 760-367-5583, desertinstitute@zipnet.net or www.joshuatree.org

Sep 14, 2007 The Mystery of Johnny Lang
The tale of Johnny Lang and the Lost Horse Mine sounds like a campfire story filled with gun slinging cowboys, cattle rustlers, horse thieves, the lure for gold, and a sticky-finger miner. Deborah Gray, Forensic Anthropologist for the Riverside Sheriff's Department, will discuss the life and death of Johnny Lang and the Lost Horse Mine.
Date/Time: Friday, Sep 14, 7 pm
Location: Historical Society of Twentynine Palms; Old Schoolhouse Museum
6760 National Park Dr., Twentynine Palms, CA
Fee: \$5
Lecturer: Deborah Gray, forensic anthropologist, Riverside Sheriff Department

Sep 30, 2007 Venomous Animals of the Desert
Feared and respected by many for their potential to inflict harm, venomous animals have long captured the fascination of humanity. William Hayes, Ph.D. and professor of biology at Loma Linda University, will explain the biology of the venomous animals in the desert and answer questions about venom and its potential impact on people and the world.
Date/Time: Sunday, September 30, 9 am - 5 pm
Location: Oasis Visitor Center, Joshua Tree National Park, Twentynine Palms, CA
Fee: \$50 for JTNPA/PINE Members
Instructor: William Hayes, Ph.D. Loma Linda University, Professor of Biology

Oct 7, 2007 Insects of the Desert
Did you know that insects can survive in temperatures of over 110 degrees Fahrenheit in the shade with little to no water? Join Kurt Leuschner, M.S. in this field class to venture into the lives of the largest group of animals in the world.
Date/Time: Sunday, October 7, 1 pm - 9 pm
Location: Big Morongo Canyon Preserve, 11055 East Dr., Morongo Valley
Fee: \$50 for JTNPA and PINE members
Instructor: Kurt Leuschner, M.S., wildlife ecologist

Oct 13, 2007 Desert Night Sky
Have you wondered how tell a planet from a star or how to navigate by the night sky? Join David Chappell, professor of astronomy and physics at La Verne University, to explore the stars, planets, nebulae, and galaxies that form our cosmic environment. This class will start inside and then move to the field for a guided exploration using sight, binoculars, and telescopes to discover the universe that surrounds us.
Date/Time: Saturday, October 13, 3 pm - 10 pm
Meet at: Oasis Visitor Center, 74485 National Park Dr., Twentynine Palms
Fee: \$50 for JTNPA/PINE Members
Instructor: David Chappell, Ph.D., Astronomy, Professor of Physics

Oct 14, 2007 Painting the Joshua Tree
Spend a day painting immersed in the Dr. Seuss-ian world of Joshua trees. Diane Best, artist and instructor, will demonstrate and guide participants through numerous ways of using black acrylic paint to simplify the structure of these complex trees, find their essence, and bring them to life.
Date/Time: Sunday, October 14, 9 am - 3 pm
Meet at: Joshua Tree Visitor Center, 6554 Park Blvd., Joshua Tree
Fee: \$40 for JTNPA/PINE Members
Instructor: Diane Best, artist, instructor

Oct 20, 2007 Night Photography
If you enjoy photography and are fascinated by the desert night sky, this hands-on course is for you! Dennis Mammana, nature photographer, will teach participants the secret of capturing the desert at sunset and dusk, creating time-lapse exposures, moonlight shots, and more.
Date/Time: Saturday, October 20, 12 pm - 8:30 pm
Meet at: Oasis Visitor Center, 74485 National Park Dr., Twentynine Palms
Fee: \$40 for JTNPA/PINE Members
Instructor: Dennis Mammana, artist, instructor

Oct 20, 28, 2007 Native American Pottery
Don't miss this special opportunity to make a Native American olla, the traditional pottery of the indigenous peoples of Joshua Tree National Park! Tony Soares, artist and potter, will present the reclaimed method of olla making with an interactive demonstration and guide participants in the process of creating their own olla with hand dug and processed clay, ancient firing techniques, and pigment glazes (all materials provided).
Date/Time: Saturday, October 20, 10 am - 3 pm, Sunday, October 28, 1 pm - 5 pm
Meet at: Joshua Tree Visitor Center, 6554 Park Blvd., Joshua Tree
Fee: \$130 for JTNPA/PINE Members
Instructor: Tony Soares, artist, Native American potter

Oct 21, 2007 Watercolor Painting in the Park
Indulge your creativity with a day of painting in Joshua Tree National Park. Immersed the desert landscape to inspire creativity, Anahita King, artist and instructor, will help students shift the desert scenery to paper with watercolor paint.
Date/Time: Sunday, October 21, 10 am - 4 pm
Location: Hidden Valley Picnic Area, Joshua Tree National Park
Fee: \$40 for JTNPA/PINE Members
Instructor: Anahita King, artist, instructor

Oct 21, 2007 Basic Desert Survival
Learn the essential big four skills needed to safely explore the sometimes harsh and often challenging desert landscape. Tony Nester, expert and author of *Desert Survival Tips, Tricks and Skills*, will teach the physical skills and mental processes that will prepare participants to discover some of the most beautiful and most dangerous habitats of the world by engaging in mock survival scenarios.
Date/Time: Sunday, October 21, 9 am - 4 pm
Meet at: Oasis Visitor Center, 74485 National Park Dr., Twentynine Palms
Fee: \$50 for JTNPA/PINE Members
Instructor: Tony Nester, author, outdoor guide

Oct 27, 28, 2007 Archaeology of Joshua Tree National Park
Discover the life and culture of the ancient peoples who were defined by the arid landscape of what is now Joshua Tree National Park. Anthropologists Joan S. Schneider, Ph.D. and Claude N. Warren, Ph.D., both of whom have extensive experience leading archaeology field studies in Southern California, will discuss the how archaeologists study human culture, history, and evolution through material remains and environmental landscapes.
Date/Time: Saturday, October 27, 8:30 am - 5 pm, Sunday, October 28, 9 am - 2:30 pm
Meet at: Oasis Visitor Center, 74485 National Park Dr., Twentynine Palms
Noncredit Fee: \$90 for JTNPA/PINE Members
Instructor: Joan Schneider, Ph.D., anthropology; Claude N. Warren Ph.D., anthropology

October 27, 28, 2007 Edible Plants of the Desert
Discover the abundance hidden in the desert during this two-day field class in which participants will prepare and taste a sampling of the desert's edible plants.
Date/Time: Saturday, October 27, 9 am - evening Sunday, October 28, 9 am - 12 pm
Meet at: Black Rock Canyon Campground Visitor Center, 9800 Black Rock Canyon Rd., Yucca Valley
Fee: \$70 for JTNPA/PINE Members
Materials Fee: \$10 (food provisions)
Instructor: William J. Pink, native skills teacher, Cupeno/Luiseno Indian

Palm and Pine Advertising

Display Advertising Rates (Black and White)*

Palm and Pine pages are 9 1/2 inches wide by 14 1/2 inches deep. There are four columns per page. Each column is 2 1/4 inches wide. Display Advertising is charged at a rate of \$12.50 per column inch. Write or e-mail for Advertising Rate Schedule.

Classified Advertising Rates

Personal: \$0.25 per word. \$3.00 minimum.

Commercial: \$0.50 per word. \$5.00 minimum.

Classified advertising is accepted to a maximum of 8 lines (40 characters to the line).

Circulation and Distribution

Rates are based on an average circulation of 6,000 per issue. The Chapter member subscription is included in membership dues. Subscriptions rates for non-members is \$9.00 for six issues. Single copies are \$1.50. The newsletter is published and distributed on or before the 1st of the month, six times each year beginning January 1.

Deadlines

Deadline: 1st of the month preceding the issue date.
(Feb 1, Apr 1, Jun 1, Aug 1, Oct 1, Dec 1)

Submission

E-mail to: ralphsalisbury@charter.net



Just outside Yosemite National Park on 50 Acres of beautiful forested hillside. Private cabins with bath or shared bath, dorms and tent cabins.

Full service Ayurvedic spa with sauna, hot tub, cold plunge, massage, scented soaking room & yoga classes.

Meeting rooms to accommodate conferences & retreats of all sizes. Outdoor amphitheater with fire pit.

Cafe at the Bug serves fresh Californian cuisine with Vegans & Vegetarians options.

Visit us once, and you'll come back for a lifetime.

Yosemite Bug Rustic Mountain Resort
6979A Highway 140, Midpines, CA 95345
toll free 866 826 7108 or 209 966 6666

Website: www.yosemitebug.com
E-mail: bughost@yosemitebug.com

Send payment to: Sierra Club, San Geronio Chapter, 4079 Mission Inn Ave., Riverside, CA 92501. Please note that payment is for Palm and Pine advertising and make Attn: Ladd Seekins

UCR Extension Field Nature Study Programs

Complete course information, including course descriptions and instructors, is available on our web site at www.extension.ucr.edu and in our current catalog. To enroll in these courses, please call (800) 442-4990 or (951) 827-4105. Fees include 20% PINE discount. If you have questions regarding any of these courses, requirements for the certificate or your current status in the certificate program, please call 951-827-5804 or email sciences@ucx.ucr.edu.

Conifers of Southern California

\$110 each with PINE discount (includes parking) (071-SCF-F11)
When: Fri., 6-8 p.m. & Sat., 8 a.m.-5 p.m. Sept. 14 & 15 (2 meeting/s)
Where: University Extension Center - Room TBA, RIVERSIDE
Note: Visitors not permitted.

Optional text: "Conifers of California," Ronald M. Lanner (0-9628505-3-5) *Botany Course for Certificate in Field Ecology*
Instructor: Michael J. Wangler, M.S., Professor of Geography, Cuyamaca College, El Cajon.

A Field Study of Birds: Fall

\$165 each with PINE discount (072-SCF-F23)
When: Tues., 7:30-9:30 p.m. & Sat., 6:30 a.m.-3:30 p.m. Sept. 18 & 22, Oct. 6 & 20 & Nov. 3 & 17 (6 meeting/s)
Where: SAN BERNARDINO COUNTY MUSEUM, REDLANDS
Note: Visitors not permitted. Class meets at San Bernardino County Museum in Redlands for first meeting only. All other dates are field trips.
Text: "A Field Study of Birds of North America, 4th edition," J. W. Fitzpatrick (07922-6877-6)
Instructor: Eugene A. Cardiff, B.A., Retired Curator of Natural History, San Bernardino County Museum, Redlands.

Geology and Natural History of Yosemite: A Weekend of Discovery

\$139 each with PINE discount (includes campsite) (072-SCF-F20)
When: Sat., 9 a.m.-6 p.m. & Sun., 8:30 a.m.-4 p.m. Sept. 22 & 23 (2 meeting/s)
Where: Field Study
Note: Information will be sent upon enrollment. Visitors not permitted.
Physical Science Course for Certificate in Field Ecology
Elective for Specialized Study Program in Field Geology
Instructor: Gary Arce, M.S., Instructor, Geology, Victor Valley College and Mentor Teacher, Apple Valley High School.

(Continued on page 9)